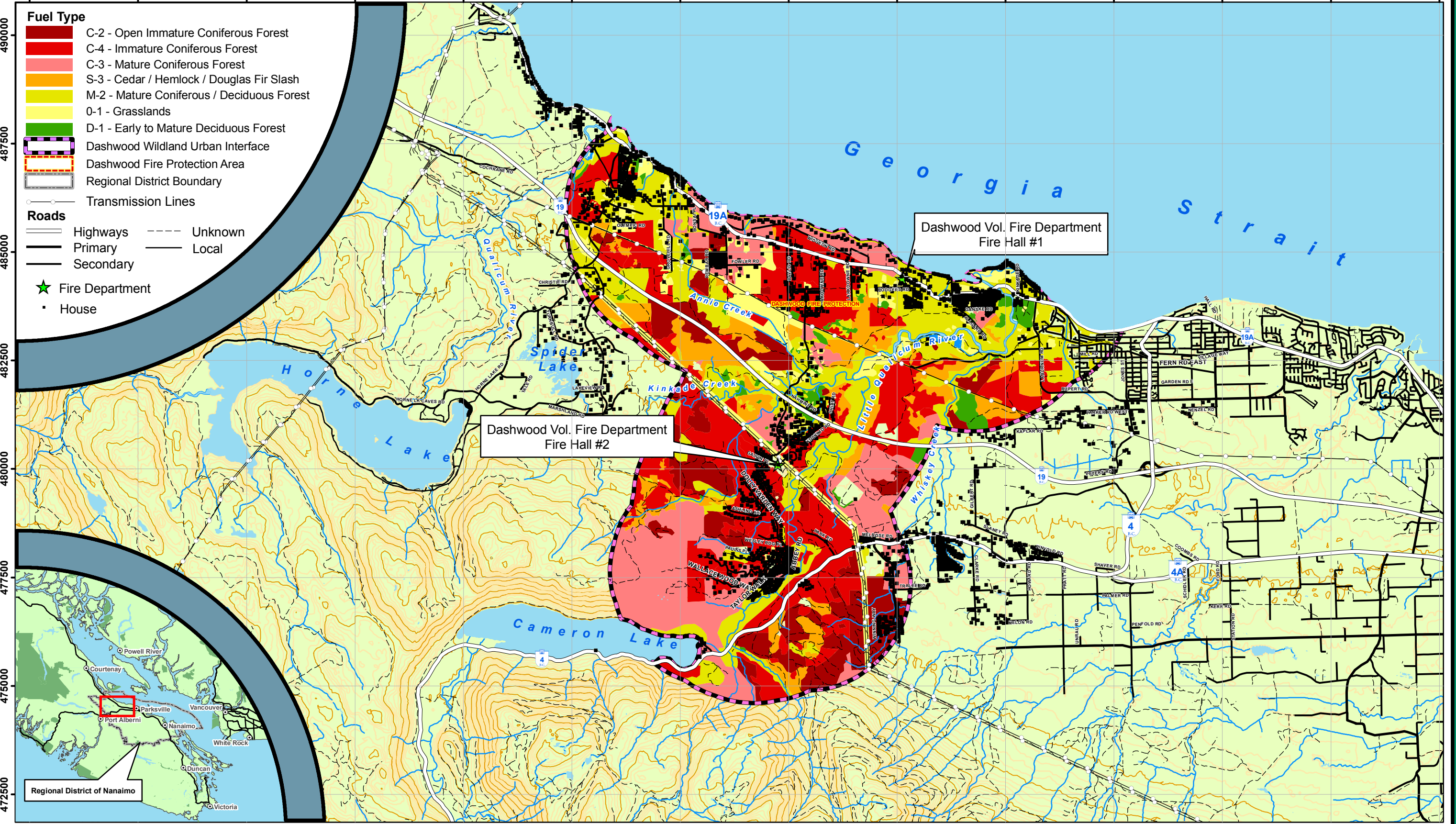


Dashwood Fuel Type Map

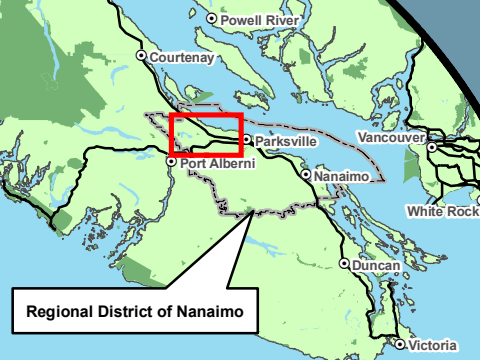
Regional District of Nanaimo



1087500 1090000 1092500 1095000 1097500 1100000 1102500 1105000 1107500 1110000 1112500 1115000 1117500 1120000



- Fuel Type**
- C-2 - Open Immature Coniferous Forest
 - C-4 - Immature Coniferous Forest
 - C-3 - Mature Coniferous Forest
 - S-3 - Cedar / Hemlock / Douglas Fir Slash
 - M-2 - Mature Coniferous / Deciduous Forest
 - 0-1 - Grasslands
 - D-1 - Early to Mature Deciduous Forest
 - Dashwood Wildland Urban Interface
 - Dashwood Fire Protection Area
 - Regional District Boundary
- Roads**
- Highways
 - Unknown
 - Primary
 - Local
 - Secondary
- Other Symbols**
- Fire Department
 - House



Path: J:\Special_Projects_Admin\Fire Management\Prevention\CWPPs\DashwoodFPD\mxds
 Map Projection: BC Albers NAD 83
 Date: July 6, 2010

Campbell River Operation
 1271 Petersen Road
 p: 250.287.2246
 f: 250.287.2247

Port McNeill Operation
 5G-1705 Campbell Way
 p: 250.956.2260
 f: 250.956.4523

www.sfmi.ca