

# A Shared Community Vision

Electoral Area 'A' OCP Review,  
Community Workshop Series  
Workshop 1 of 4 - Growth Management

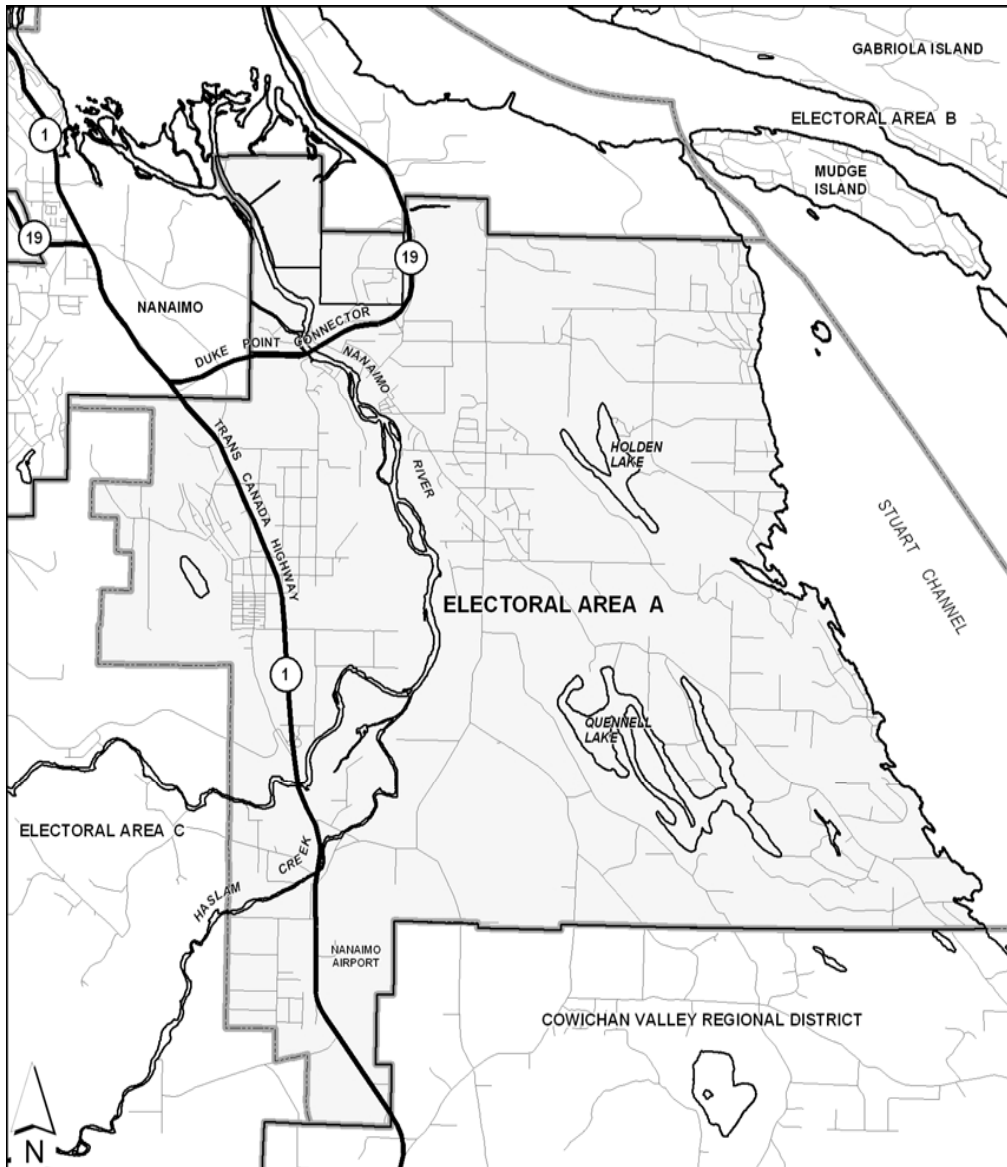
January 31, 2009



CONTENTS	
⇒ Welcome and Workshop Description	Page 2
⇒ Exercise Question 1	Page 7
⇒ Exercise Question 2	Page 11
⇒ What is Rural Integrity and Rural Character?	Page 12
⇒ Sustainability Principles	Page 13
⇒ A Shared Community Vision	Page 14
⇒ Mapping Session Highlights	Page 15
⇒ OCP Review Process	Page 16
⇒ What are the next steps?	Page 18

AGENDA	
9:00-9:15	Opening remarks and exercise instructions
9:15-11:10	Exercise question number 1
11:10 - 11:20	Break
11:20-11:50	Exercise question number 2
11:50 - 12:00	Discussions and closing remarks

# WELCOME TO THE WORKSHOP



The Regional District of Nanaimo is currently reviewing the Electoral Area 'A' Official Community Plan. Electoral Area 'A' includes the neighbourhoods of Cassidy, South Wellington, Cedar, Yellow Point, and other unincorporated areas within the Regional District of Nanaimo.

A number of activities have taken place so far during the Official Community Plan review process including a Community Forum, three Open Houses, the formation of a Citizen's Committee, three Community Mapping Sessions, a Sustainability Principles Workshop, and a Visioning Workshop. A brief description of the Official Community Plan review process is included on Pages 16 and 17 and a summary of the Community Mapping Sessions is included on page 15 of this exercise book.

Based on input from the Community, this Official Community Plan review is focused on Sustainability. The Community has developed a set of Sustainability Principles that form the framework for making effective decisions and will be used to guide the Official Community Plan review process. The Sustainability Principles are included on page 13 of this document.

The Community has also created 'A Shared Community Vision', which is a statement of community values and a description of what the community would like to become in the future. The Community Vision is included on page 14 of this document.

This workshop builds on the Visioning Workshop by providing an opportunity to develop the goals and objectives that will help the community achieve its vision for the future.

# Workshop Description

The purpose of workshop 1 is to develop goals and objectives related to **growth management** which help us achieve the Community Vision. In doing so we will be thinking about our community and asking ourselves what steps do we need to take to achieve our vision for the future. As we develop goals, and objectives, we need to ensure that they are consistent with the Sustainability Principles developed earlier in the Official Community Plan review process.



What are Goals and Objectives?		Examples
<b>Goal</b>	A goal is a statement that indicates a desire for something that the community would like to achieve in the future. A goal is generally broad in scope and works towards the desired outcome articulated by the community's vision and principles.	Reduce greenhouse gas emissions.
<b>Objective</b>	An objective is a measurable statement indicating how the community would like to achieve its goals. Each goal may have a number of different related objectives.	Increase transit ridership in Electoral Area 'A' by 75% by the year 2015.

# Growth Management—What is it, why is it important, what is its current state?

## What is Growth Management?

Wikipedia, an online encyclopaedia, defines Growth management as ‘a set of techniques used by government to ensure that as the population grows that there are services available to meet their demands. These are not necessarily only government services. Other demands such as the protection of natural spaces, sufficient and affordable housing, delivery of utilities, preservation of buildings and places of historical value, and sufficient places for the conduct of business are also considered.

In essence, growth management seeks to create and maintain logical land use patterns that make efficient use of land and resources. This also implies creating compact forms of development and avoiding suburban sprawl.

## Why is Growth Management important?

Growth management is the primary function of community planning. While, poorly managed growth and development can be a detriment to the community, well thought out and planned growth and development can provide lasting benefits such as improved recreational opportunities, more efficient servicing, local employment opportunities, environmental protection, efficient use of land and resources, and other desirable community amenities.

Growth management helps us avoid suburban sprawl, protect the environment, create more compact liveable communities, preserve natural resources, protect our ability to produce local food, reduce greenhouse gas emissions, provide cost effective services, and preserve and enhance our quality of life. Without carefully managed growth, services like transit, sewer, water, recreational programming, and health services become increasingly difficult and costly to provide.

Perhaps more importantly, a sound growth management strategy can ensure that the things we love about our community are not only maintained, but are also enhanced.

## Area ‘A’ Growth Management Overview

One of the ways that growth is managed in Electoral Area ‘A’ is by designating an Urban Containment Boundary (UCB). The UCB is a line defined by the Regional Growth Strategy which separates land that is considered ‘urban’ from land that is considered ‘rural’.

In Electoral Area ‘A’ there are two village centres within the UCB, the Cedar Village Centre and the Cassidy Village Centre. The Village Centres support a mix of uses that when combined help create a more complete and compact community with places to live, work, recreate, shop, access services, and learn.

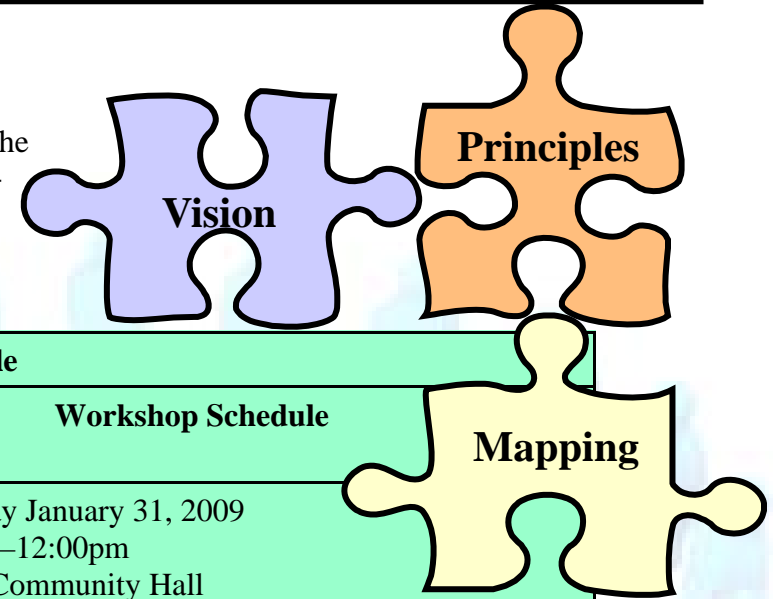
Land within the UCB is generally where additional development is encouraged in order to preserve large parcels of land outside the UCB for agriculture, resource management, and other rural uses.

Community sewer and water servicing are supported on lands located inside the UCB to accommodate additional development. In general, development is discouraged on lands located outside the UCB and servicing is not supported to allow for additional development.

# Now that we have a Community Vision, Sustainability Principles, and Community Mapping Now What?

*Its time to start putting the pieces together...*

To help get us started, Regional District of Nanaimo has extracted phrases and sentences from the Community Vision and has reworked them into goals for consideration as shown on the following page. Since we are creating an Official Community Plan based on sustainability, the sample goals have been categorized in to four groups with one workshop focusing on each group.



Community Workshop Description and Schedule			
Workshop Number	Workshop Title	General Description of the topics that may be covered	Workshop Schedule
1	Growth Management	Urban containment, land use, protecting rural values, servicing, the role of village centres, community servicing	Saturday January 31, 2009 9:00am–12:00pm Cedar Community Hall 2388 Cedar Road
2	Community Well - being	The role of affordable housing, seniors and youth, recreation, sports, and arts, inclusive community	Saturday January 31, 2009 1:00pm-4:00pm Cedar Community Hall 2388 Cedar Road
3	Environmental Integrity	Minimizing environmental impacts, reducing greenhouse gas emissions, environmental stewardship, groundwater protection, transportation systems	Saturday February 21, 2009 9:00am–12:00pm Cranberry Community Hall 1555 Morden Road
4	Economic Health	Local employment, the economy, resource use, agriculture	Saturday February 21, 2009 1:00pm-4:00pm Cranberry Community Hall 1555 Morden Road



# Example Goals from the Community Vision

Workshop No. 1 Growth Management	1.	Direct growth into the well-defined village centres within the Urban Containment Boundary.
	2.	Avoid additional development outside of the Urban Containment Boundary.
	3.	Make agriculture, resource uses, and conservation of biodiversity the priority uses in areas located outside of the Urban Containment Boundary.
	4.	Manage land use so that rural values are maintained.
Workshop No. 2 Community Well-being	1.	As a community, support the Official Community Plan.
	2.	Welcome a diversity of residents from all economic levels.
	3.	Support recreation, culture, sports, and the arts.
	4.	Build community pride.
	5.	Retain seniors and young families within the community.
	6.	Provide housing which is attainable for all Area residents.
Workshop No. 3 Environmental Integrity	1.	Become more socially, environmentally, and economically sustainable.
	2.	Minimize the impacts of human activities, manage natural, economic and social systems and resources in a way that enhances quality of life, yet does not diminish the ability of future generations to also meet their needs.
	3.	Support the creation of a multi-modal transportation system.
	4.	Reduce greenhouse gas emissions.
	5.	Become stewards of the environment.
Workshop No. 4 Economic Health	1.	Become a leader in local food production.
	2.	Provide local employment and support the economy.
	3.	Support historical roots in agriculture, mining, forestry, and other resource uses.

# Workshop 1—Growth Management Question 1

- 1 Below are some goals developed from the Community Vision with respect to growth management. Please review the goals below, the Sustainability Principles on page 13, the Community Vision on page 14, and the summary of the community mapping sessions on page 15 and use the space provided on the following page to:
- i. tell us if you agree with these goals and why they are important in terms of becoming more sustainable; and,
  - ii. add any other goals that you feel are necessary to achieve the Community Vision with respect to **growth management**.
- 1b. In your own words explain why each goal is important in helping us achieve the Community Vision, how it will help us become a more sustainable community, and how it is consistent with the direction provided by the Sustainability Principles. Remember, only goals and objectives that are consistent with the Sustainability Principles will be included in the Official Community Plan.

## Sample goals developed from the Community Vision with respect to growth management

1.	Direct growth into the well-defined village centres within the Urban Containment Boundary.
2.	Avoid additional development outside of the Urban Containment Boundary.
3.	Make agriculture, resource uses, and conservation of biodiversity the priority uses in areas located outside of the Urban Containment Boundary.
4.	Manage land use so that rural values are maintained.

# Workshop 1—Growth Management Question 1 Cont...

**Given the Sustainability Principles and the Community Vision, do you agree with all or some of these goals? Please tell us why they are important in helping us achieve the Community Vision and in helping the community become more sustainable.**

	<b>Sample Goals</b>	<b>Do you agree with this goal? (Yes or No)</b>	<b>why or why not and why are they important?</b>
<b>1</b>	Direct growth into the well-defined village centres within the Urban Containment Boundary.		
<b>2</b>	Avoid additional development outside of the Urban Containment Boundary.		
<b>3</b>	Make agriculture, resource uses, and conservation of biodiversity the priority uses in areas located outside of the Urban Containment Boundary.		
<b>4</b>	Manage land use so that rural values are maintained.		



# Workshop 1—Growth Management Question 1 Cont...

Use this space to tell us what additional goals should be established to help us achieve the Community Vision with respect to growth management. If you need extra space, please attach a separate sheet.

Goal #	Goals to help us achieve the Community Vision
1	
2	
3	
4	
5	
6	
7	
8	
9	
10	



# Workshop 1—Growth Management Question 1 Cont...

Select your top 5 goals and tell us why each goal is important in helping us achieve the Community Vision, how it will help us become a more sustainable community, and how it is consistent with the direction provided by the Sustainability Principles. Remember, only goals and objectives that are consistent with the Sustainability Principles will be included in the Official Community Plan .

Goal #	Goal	Why is it important?
1		
2		
3		
4		
5		



# Workshop 1—Growth Management Question 2

---

---

Now that you have developed some goals and narrowed them down to your top 5, what steps and actions (objectives) should we take to achieve each goal?

Goal #	Goal	Steps and actions we should take to achieve the goals
1		
2		
3		
4		
5		

# What is Rural Integrity and Rural Character?

---

**If you have extra time** please use the space provided to tell us what the terms 'Rural Integrity' and 'Rural Character' mean to you and how preserving rural integrity and rural character will help us achieve the Community Vision.

Rural Integrity means...

Rural Character means...

# Electoral Area 'A' OCP - Sustainability Principles

- Principle 1** Preserve local history and rural character.
- Principle 2** Maintain functioning rural landscapes.
- Principle 3** Consider the needs of future generations in today's decisions.
- Principle 4** Adapt to nature's complexity, diversity, and unpredictability.
- Principle 5** Commit to environmental stewardship and conservation
- Principle 6** Nature has intrinsic value.
- Principle 7** Build an active community that connects people.
- Principle 8** Develop a safe and healthy community for all residents.
- Principle 9** Support a wide range of transportation and mobility options.
- Principle 10** Economic, social and environmental factors are interdependent and must be considered together.
- Principle 11** Support and Strengthen the local economy.
- Principle 12** Provide services in an efficient and cost effective manner.
- Principle 13** Encourage and facilitate participation by all stakeholders.
- Principle 14** Transparency and clarity of process.
- Principle 15** Respect the community's diversity



Photos taken at the Sustainability Principles Workshop

*A principle is an open ended broad statement that forms the framework for making effective decisions and provides guidance in the formation of goals.*



# A Shared Community Vision

Electoral Area 'A' is a diverse caring community full of local talent, which respects its cultural and historical roots in agriculture, mining, forestry, and other resource uses. Electoral Area A residents include members of the Snuneymuxw and Chemainus First Nations.

Electoral Area 'A' is also a community with a strong emphasis on the preservation of its existing rural values, which are deeply entrenched in the community and passed down through generations. Rural village feel, lands in agricultural and resource production, quietness, open spaces, opportunities to interact and be in touch with and appreciate nature, and clean air and water are some of the values which contribute towards area residents' way of life and is the reason we call Electoral Area 'A' home.

On December 6, 2008, the community came together to develop 'A Shared Community Vision'. This Vision recognizes that environmental, social, or economic changes may be needed to ensure that the things the community values today are preserved and enhanced for future generations. It also ensures that the community continues to work toward sustainability in consideration of the potential global impacts of climate change.

The community vision is:

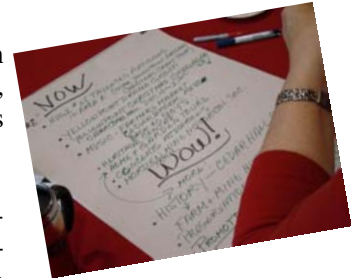
*It is 2033, and Electoral Area 'A' is a highly desirable place to live, work, and play and as a result has become more socially, environmentally, and economically sustainable. The community has evolved over time through careful planning and guidance provided by the Official Community Plan, which has been upheld by the Regional District of Nanaimo and strongly supported by members of the community. The Official Community Plan is based on the concept of sustainability and 'smart growth', which seeks to minimize the impacts of human activities. This has been accomplished by managing natural resources, as well as economic environmental, and social systems in a way that enhances quality of life, yet does not diminish the ability of future generations to meet their needs.*

*Electoral Area 'A' has become a leader in local food production and sustainability and is often showcased as a model community due to its environmental stewardship and protection policies, growth management strategies, innovative use of alternative technologies, green building programs, recreational and sports opportunities, diverse culture, artistic talent, and excellent multi-modal transportation system.*

*After nearly 25 years of well managed development, rural values are not only maintained and protected but are also enhanced. Young families and seniors are now attracted to and are staying within the community. There are opportunities for local employment, which contribute to the local economy and have minimal impacts on the environment. Per capita green house gas emissions have been reduced and continue to decline as the economy prospers.*

*Growth is directed into well-defined village and neighbourhood centres. Growth and development outside these centres has largely been avoided as agriculture, resource use, and conservation of biodiversity have become the top priority for these areas.*

*The community is a vibrant place to live where a diversity of residents from all economic levels and ethnic backgrounds are welcomed and have an enhanced sense of community pride. Electoral Area 'A' residents feel safe in their community and enjoy the personal freedom a rural lifestyle provides.*



*The Vision is a result of bringing citizens together to develop a shared image of what they want their community to become.*



Photos taken at the Visioning Session



# Background Information - Highlights of the Mapping Sessions

Need to limit and control industrial uses.

Improving connectivity between South Wellington and Cedar was desirable.

There are many constraints to non-vehicular traffic that must be overcome.

Agriculture is very prominent in the Community and should be strongly supported.

Future and existing commercial opportunities along Cedar Road

Desire to protect landmarks in the community.

Non-vehicular bridge across Nanaimo River is important.

There are areas where residents are concerned with the impacts of land use on groundwater

*The Mapping Sessions identified important features, challenges, and opportunities within the community*

Water quality and quantity are very important

Septic disposal was a concern in some areas



The Morden Colliery Trail is important and should be complete.

A number of comments were related to improving safety for both vehicular and non-vehicular traffic.

A general desire for more parks i.e waterfront park

Watercourses are important and should be protected and/or enhanced.

The Cassidy Farmers Market is a prominent location in the Community and is important.

There was a lot of interest in developing trail networks which included improving existing trails, creating new trails, and improving road shoulders.

There is a desire for more affordable housing.

Transit was desirable as well as other modes of transportation such as rail.

(All comments received at the Mapping Sessions are available upon request and by going to [www.asharedcommunityvision.ca](http://www.asharedcommunityvision.ca))

# About the Official Community Plan Review

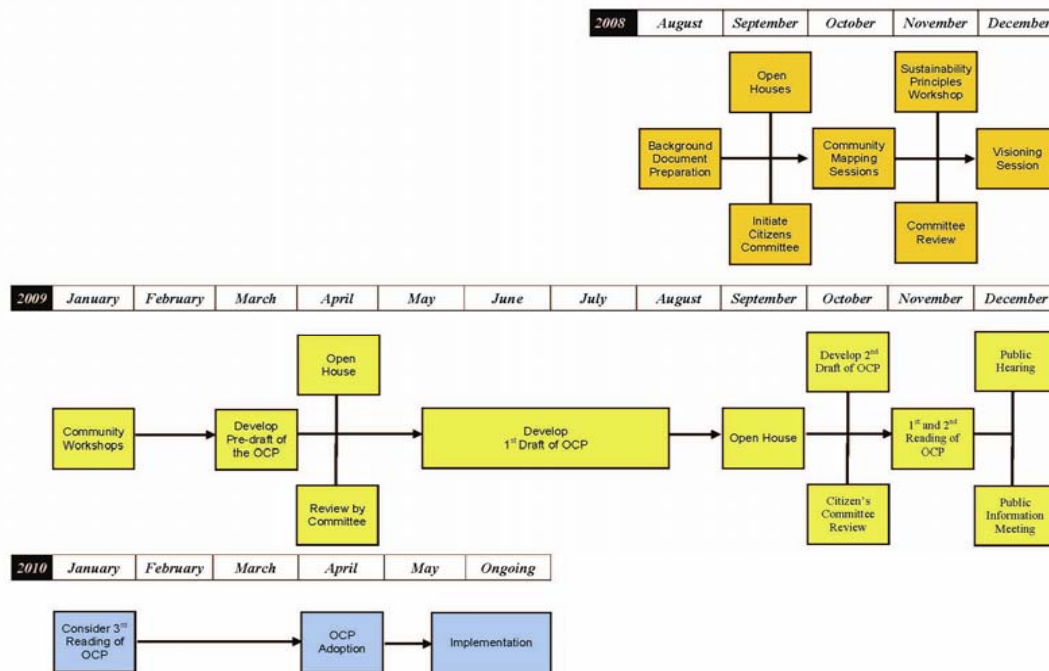
## What we have done so far...

**Community Forum:** individuals were asked to share their views on sustainability and to share what they would like included in the Official Community Plan review, how they would like to participate, and how the Regional District of Nanaimo should communicate with the community.

**Open Houses:** Three Open Houses were held to present the Official Community Plan terms of reference, which is based on the input received from the Community Forum

**Citizen's Committee:** A Committee consisting of 17 community members who represent a diversity of interests and geographic locations was formed to assist with providing community input throughout the Official Community Plan review.

## Electoral Area 'A' Official Community Plan Review Process



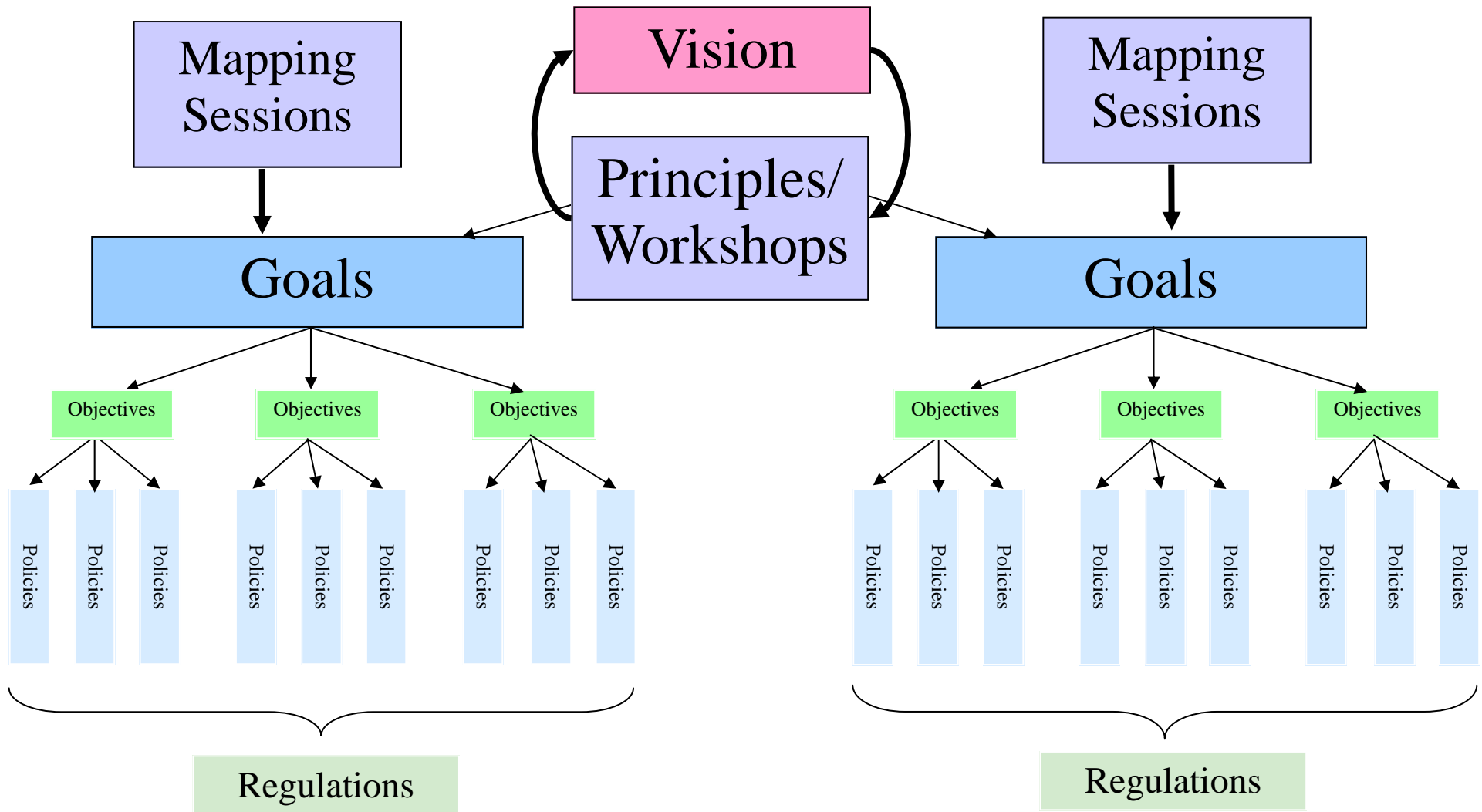
**Community Mapping Sessions:** Three workshops were held to obtain community input on what is important in the community and where the challenges and opportunities are.

**Sustainability Principles Workshop:** based on the input from the Community Forum, it was clear that sustainability was an important issue. Therefore, the new Official Community Plan will be based on a set of sustainability principles which will guide the Official Community Plan review process and ensure that future decisions help the community become more sustainable. The Sustainability Principles workshop provided input, which led to the formation of 15 Sustainability Principles.

**Visioning Session:** A workshop was held to develop A *Shared Community Vision*. The intent of the Community Vision is to articulate the future desired characteristics of Electoral Area 'A'.

**Community Workshops:** This is workshop 1 of a series of 4 workshops designed to help develop goals and objectives that help us achieve the Community Vision. Now that we know where the community wants to be in the future, these workshops will help determine how to get there.

# Background Information - How what we have done so far fits in to the Area 'A' Official Community Plan Review



# What Are The Next Steps?

The information gathered at each of the four workshops along with the information submitted by those who complete the workbooks on their own will be used to develop a refined list of goals and objectives. From there, Regional District of Nanaimo staff will work with the Official Community Plan Review Citizen's Committee to develop policies that help us achieve each goal and objective.

During this time, there will be opportunities for detailed discussion of topics related to the Official Community Plan during the Official Community Plan Review Citizen's Committee meetings. Some of the topics for discussion may include rural integrity, village centres, density, minimum lot size, form and character, community servicing, groundwater protection, greenhouse gas emission reductions, urban interface fire, etc. All Official Community Plan Review Citizen Committee Meetings are open to the public and you are encouraged to attend.

The next step in the process, as shown on page 16, is to develop a pre-draft of the Plan, which will be presented to the Community some time in March or April 2009.

## OCP Review Citizen's Committee Meeting Schedule

The Committee meets the second Monday of every month at 6:30pm at the North Cedar Improvement District Fire Hall located at 2100 Yellow Point Road.

The next meeting dates are February 9, 2009 and March 9, 2009

Please go to the project website for more information.

## Electoral Area 'A' OCP Review Schedule of Events

Date	Event	Location	Address	Time
Jan 31, 2009	Community Workshop (Growth Management)	Cedar Community Hall	2388 Cedar Road	9:00am-12:00pm
Jan 31, 2009	Community Workshop (Community Well-being)	Cedar Community Hall	2388 Cedar Road	1:00pm - 4:00pm
Feb 21, 2009	Community Workshops (Environmental Integrity)	Cranberry Community Hall	1555 Morden Road	9:00am-12:00pm
Feb 21, 2009	Community Workshops (Economic Health)	Cranberry Community Hall	1555 Morden Road	1:00pm - 4:00pm

For more information or if you have any questions or comments about the material presented at this workshop or within this program, please contact the Regional District of Nanaimo Planning Department

at:

(250) 390-6510

or go to the project website:  
[www.asharedcommunityvision.ca](http://www.asharedcommunityvision.ca)