



# WASTEWATER SERVICES PRESENTATION

20 April 2009

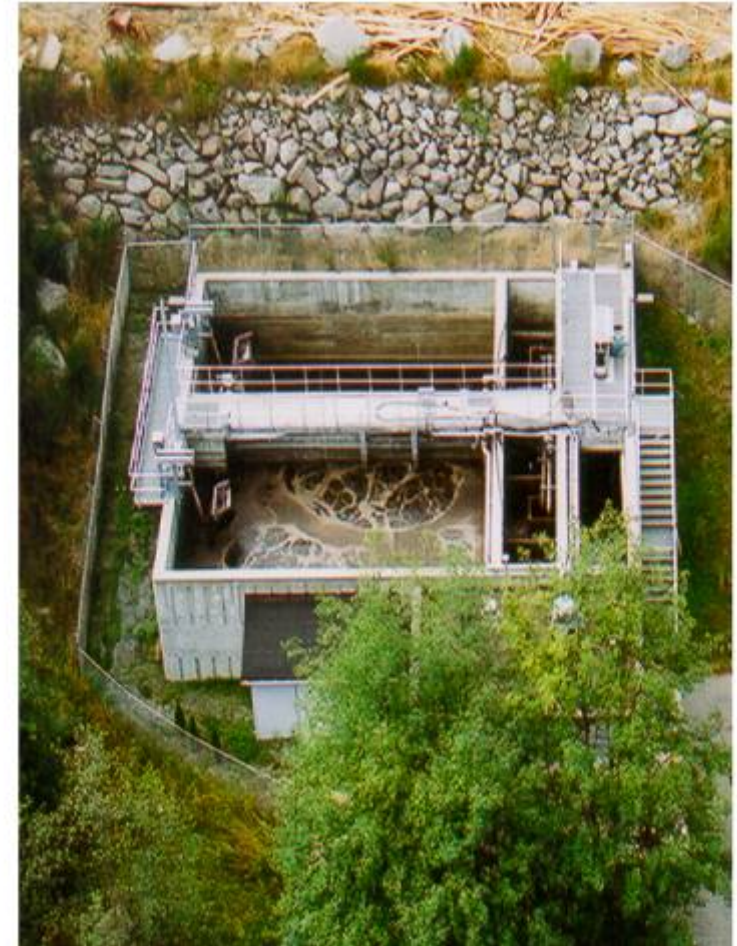






# DUKE POINT

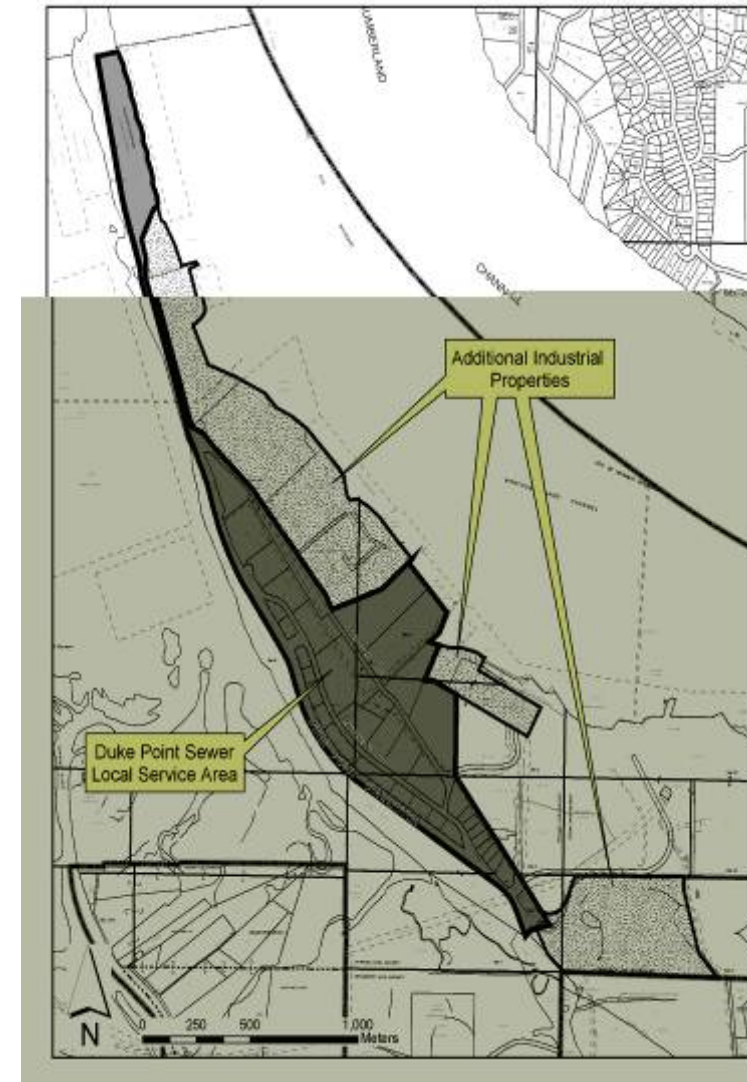
- Built 1981; Upgraded in 1999
- RDN Assumed Ownership in 1999
- Secondary Treatment with UV Disinfection; Marine Outfall





# DUKE POINT

- Capacity = 910 m<sup>3</sup>/day
- Serves 22 Industrial Clients & Secondary School
- Will Eventually Service Cedar Village Centre & Cedar Estates







# AREA A SERVICING

- Capacity of DPPCC Expanded to Village Centre/Cedar Estates
- Gravity System to be Installed by End of 2009
- Trunk Line Sized to Serve Cedar UCB







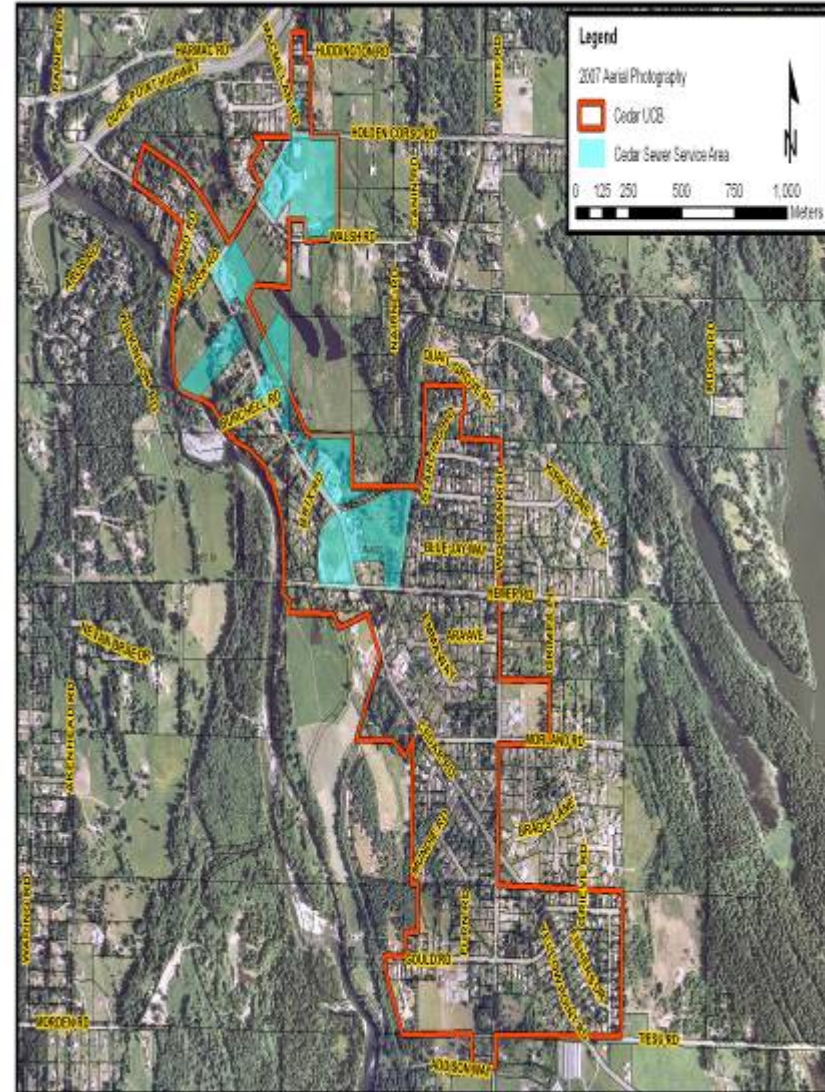
# AREA A SERVICING

## ➤ Servicing to Remaining Village Area:

- Increased Capacity at Duke Point
- New Collection System

## ➤ User Pay Principle

## ➤ Limited Access to Grants





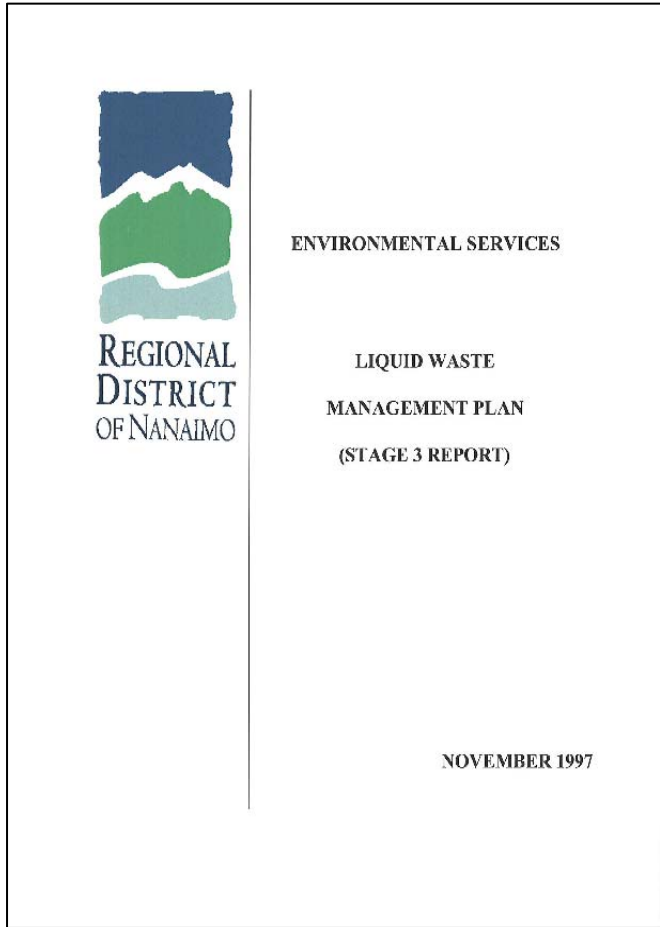
# SepticSmart



## SERVICING STRATEGIES

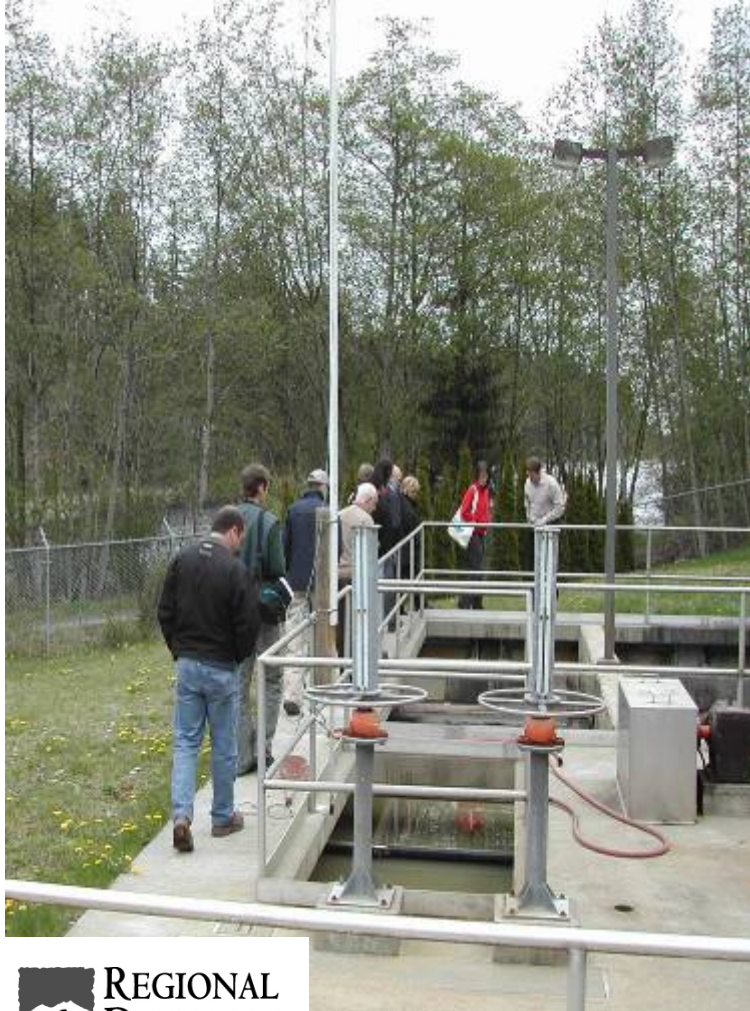
- Onsite Septic Systems
- SepticSmart Program
- Funding for Septic System Management Study
- Package Treatment Plants





## LWMP

- Planning for Programs, Policies, and Technologies
- LWMP was Finalized in 1997; Approved 1999
- Review Began February, 2008 with LWAC



# LWMP

Currently Reviewing:

- Policies for Electoral Areas
- Policies for Package Treatment Plants
- Management Strategies for Onsite Systems





## LWMP

- Public Consultation Nov/Dec 2009
- Anticipated Completion Early 2010
- Updates Found at:  
[www.rdn.bc.ca](http://www.rdn.bc.ca)



# QUESTIONS?