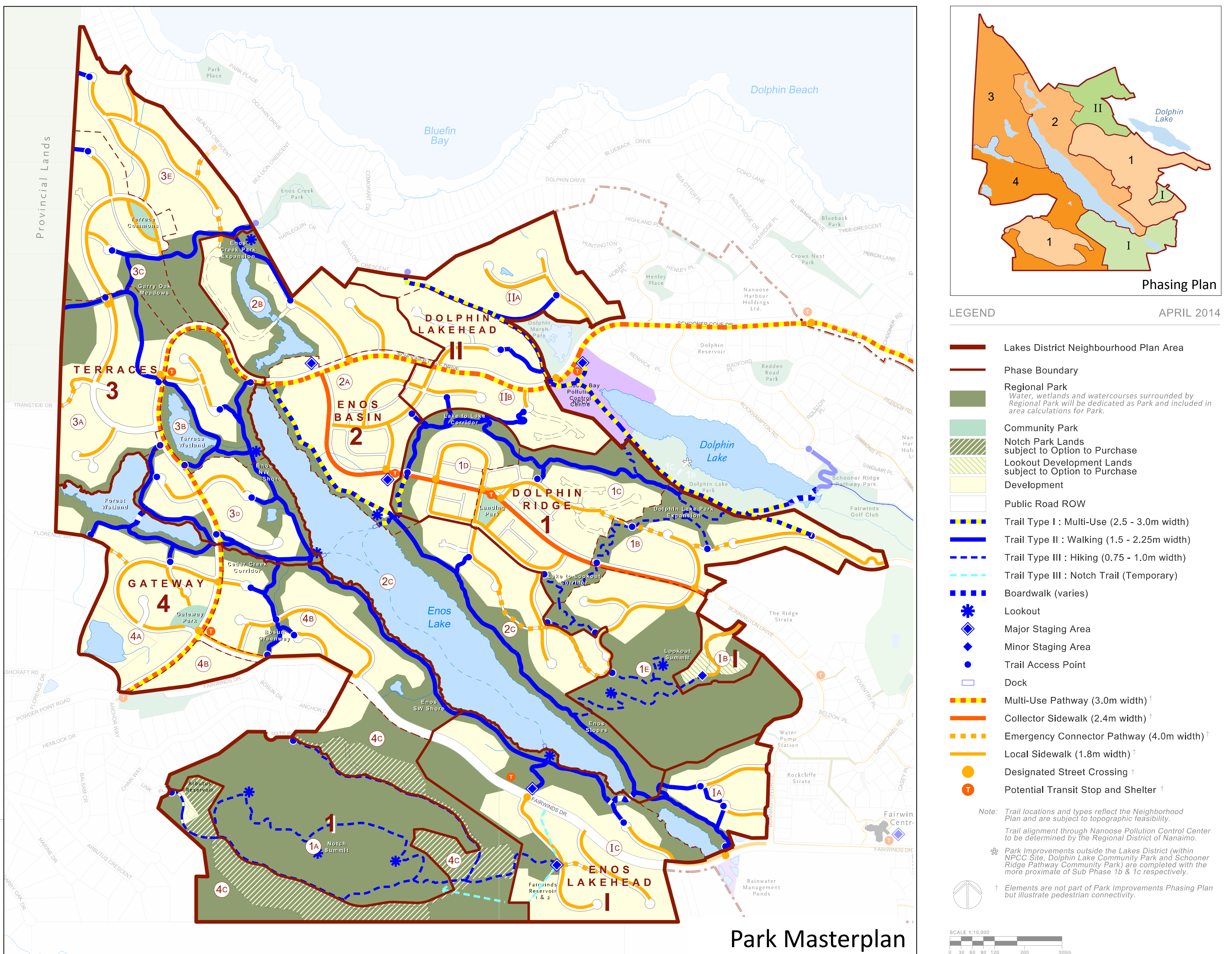


Regional Park Masterplan

The Regional Park Masterplan identifies the land and amenities to be included in the Regional Park. The following are the primary regional park features:

- approximately 100 ha of currently private land will be dedicated as Regional Park over 6 phases (about 20 years depending on market conditions)
- 2.2 km of multi-use trail
- 8.9 km of walking trail
- 5.1 km of hiking trail
- 0.24 km of associated boardwalks and bridges
- 10 lookouts
- 4 major staging areas
- 1 minor staging area
- multiple access points and associated park infrastructure

The Regional Park Masterplan is illustrated below.



The lands identified as "Option to Purchase" are available for the RDN to buy from Fairwinds to incorporate into the Regional Park:

- The Notch Option to Purchase lands - zoned Regional Park, "no build" covenant, option to purchase within five years after the first subdivision of the Lakes District Lands
- The Lookout Option to Purchase lands - zoned Residential Multiple Dwelling, option to purchase within three years after the first subdivision in the Lakes District Phase 1E

PARK MASTERPLAN