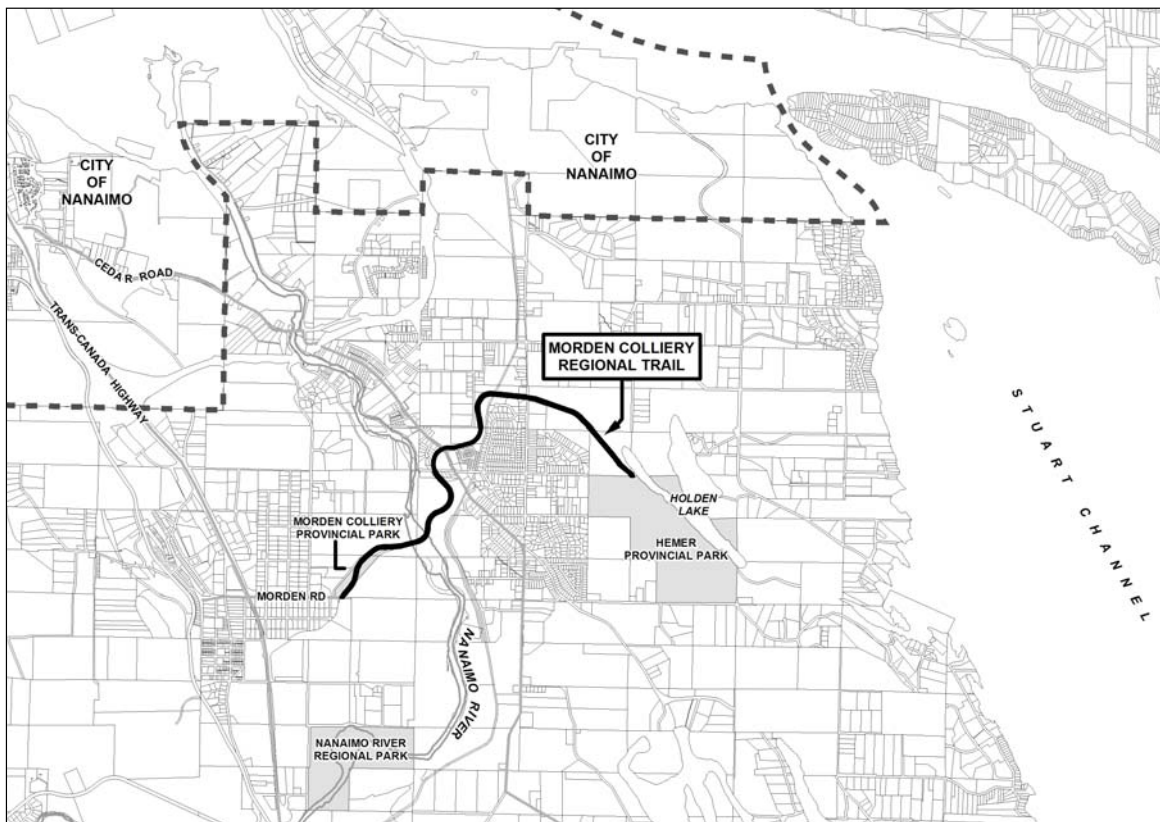


INTRODUCTION



Location of the Morden Colliery Regional Trail corridor in Cedar and South Wellington, BC.

MCRT LOCATION

The Morden Colliery Regional Trail (MCRT) is a 4km-long corridor of Provincial Crown Land located between Morden Colliery Historic Provincial Park in South Wellington and Hemer Provincial Park in Cedar.



Tippel at south MCRT trailhead.

MCRT DESCRIPTION

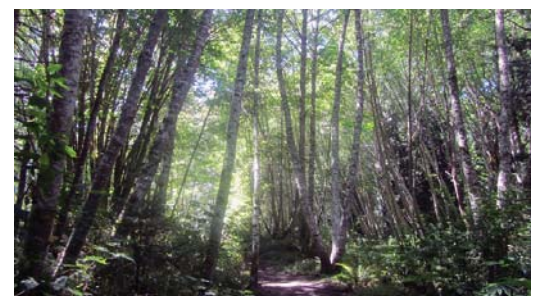
The RDN initiated development of the MCRT corridor for recreational trail use in 1995 under license from the Province of British Columbia. The MCRT runs along an old rail grade used to move coal from the mines of South Wellington to Boat Harbour during the early years of the 20th Century.

Over the past 20 years, and under the management of the Regional District of Nanaimo, this segment of a historical rail corridor has become a popular regional and community route for walking, nature appreciation, horseback riding and cycling.

Because there is currently no bridge crossing over the Nanaimo River within the MCRT—although historically a rail bridge crossing did exist—the trail network of the MCRT consists of two separate segments: a 1km-long south segment and a 2km-long north segment.

- SOUTH SEGMENT: Morden Colliery Historic Provincial Park to the Nanaimo River (approximately 1km long)
- NORTH SEGMENT: Cedar Road (at Cedar Plaza or 49th Parallel) to Hemer Provincial Park (approximately 2km long)

The CENTRAL segment of the MCRT, which runs approximately 1km through agricultural land from the Nanaimo River to Cedar Road, is undeveloped.



MCRT south of the Nanaimo River.



MCRT south terminus at Nanaimo River.



MCRT north terminus at Hemer Provincial Park.