

# DESIGN AND COST

## BRIDGE DESIGN + COST

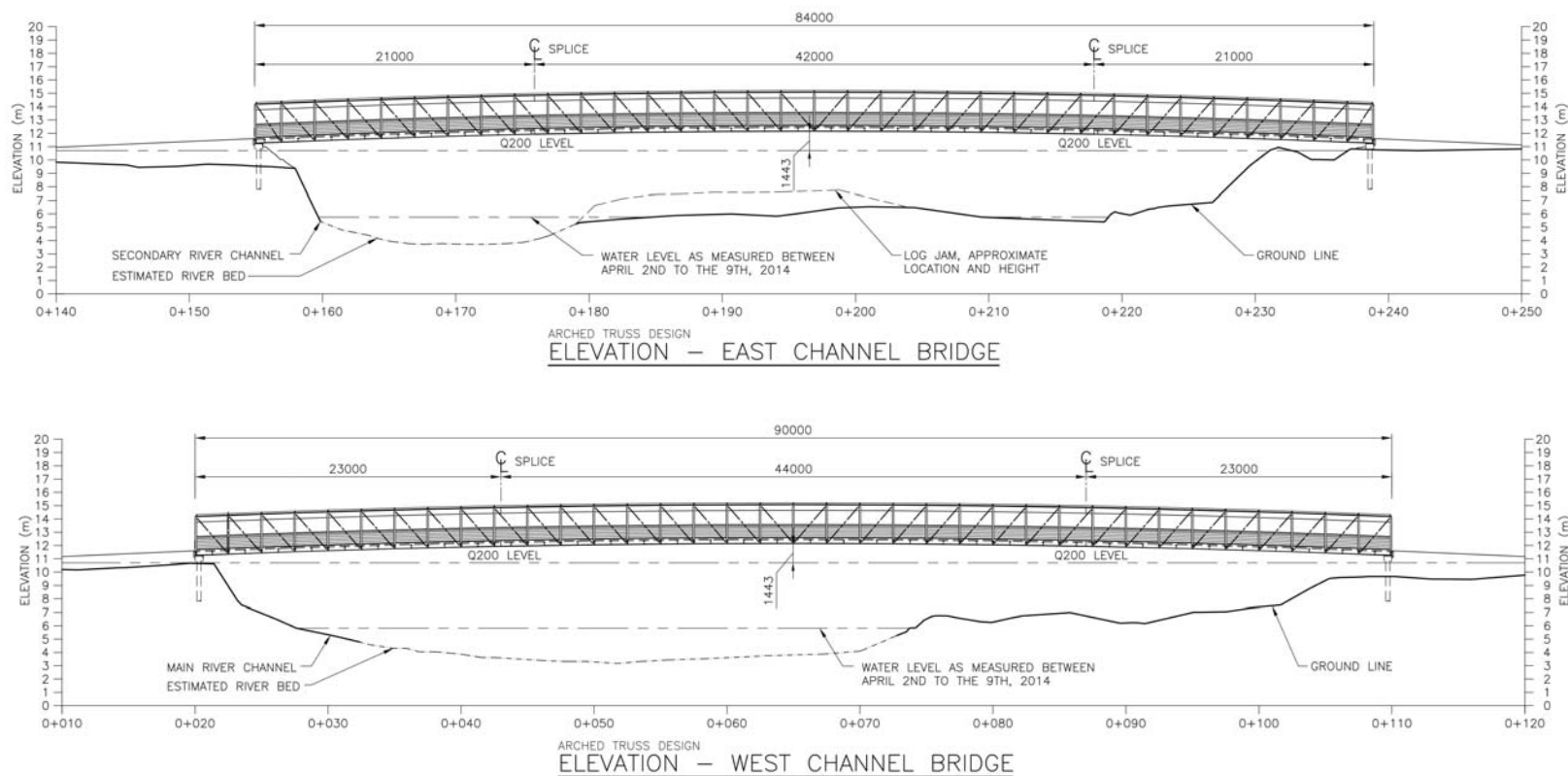
The 2014 Feasibility Study provides two bridge design options: Steel Truss and Cable Suspension. The **Steel Truss Design** option was chosen by the Regional Board due to the following advantages:

- Rigid bridge deck with less bounce
- Durable surface that is less vulnerable to vandalism
- Lower long-term maintenance costs
- Similar in design to a rail bridge and therefore historically referential



Example steeltruss bridge design provided by Herold Engineering.

A conceptual bridge design that addresses “front country” trail conditions and multi-use accessibility (pedestrian, cyclist, wheelchair, equestrian) is included in the Feasibility Study and shown below:

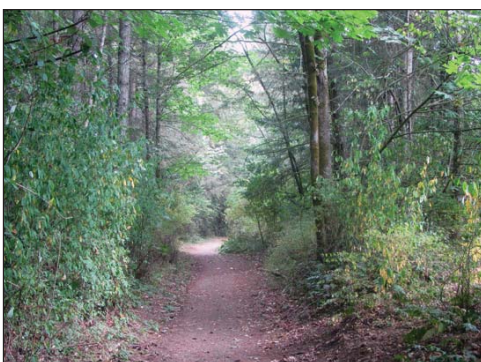


## ESTIMATED COST AND BUDGET

Project development (including future operational costs) will be funded by all seven electoral areas and all four municipalities within the Regional District of Nanaimo through the Regional Parks and Trails Function. The cost of bridge construction (for two steel truss, multi-use bridges) is estimated at \$1,473,000 to \$1,623,000 (including a 30% contingency):

- **\$1,473,000 – PEDESTRIAN, CYCLIST, WHEELCHAIR accessible bridge**
- **\$1,623,000 – PEDESTRIAN, CYCLIST, WHEELCHAIR + EQUESTRIAN accessible bridge**

Approximately \$1,200,000 has been set aside within the Regional Parks and Trails Capital Budget and Five Year Financial Plan. The RDN will also review other funding options to help finance the project.



Existing trail between Cedar Road and Woobank Road.

## TRAIL DESIGN + COST

Construction of the currently undeveloped section of the Morden Colliery Regional Trail (a 1km stretch from the Nanaimo River to Cedar Road) will be completed in conjunction with bridge development. The new trail will be similar in design to existing sections of trail: approximately 2m wide with compacted gravel surfacing.

Trail development will be funded through the Regional Parks and Trails Function with an estimated cost of approximately **\$250,000**.