

Huxley Skatepark, Gabriola Island

Concept Design - Site Plan & Context

Context Plan

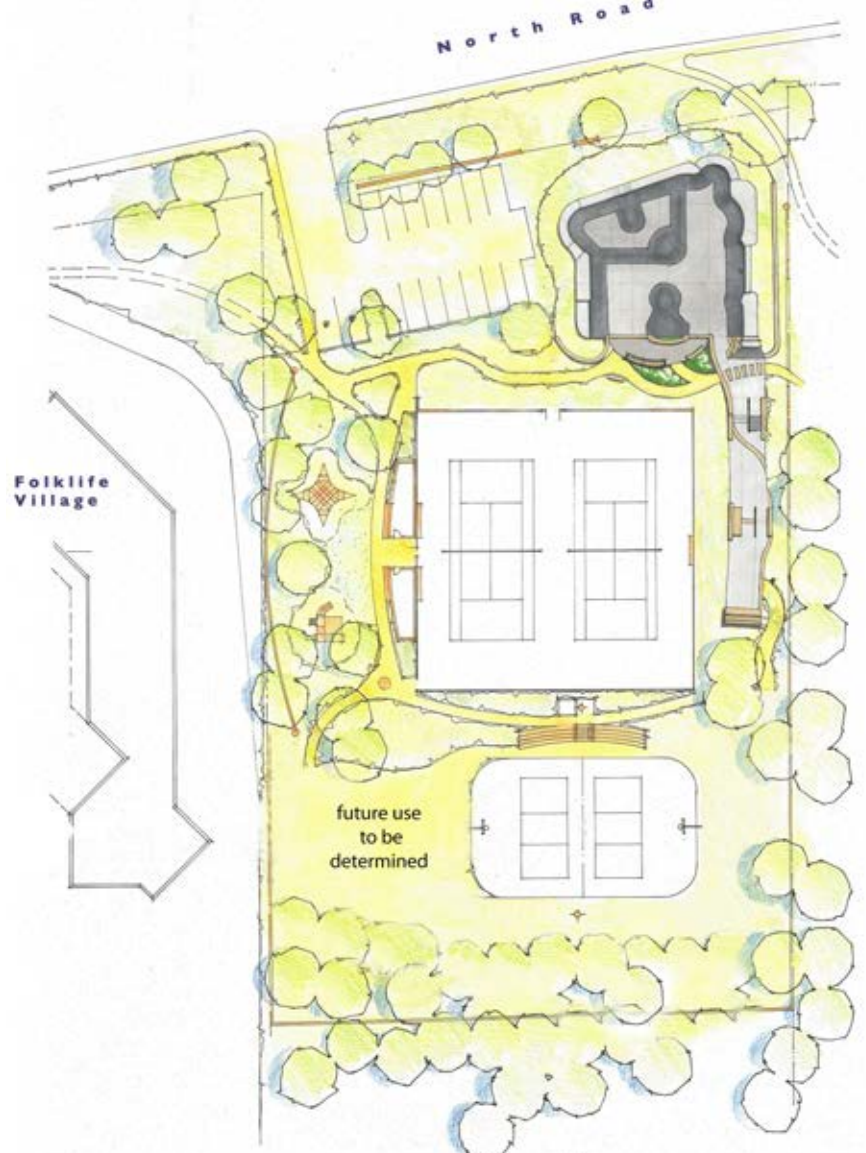


Site Plan



Skatepark Features

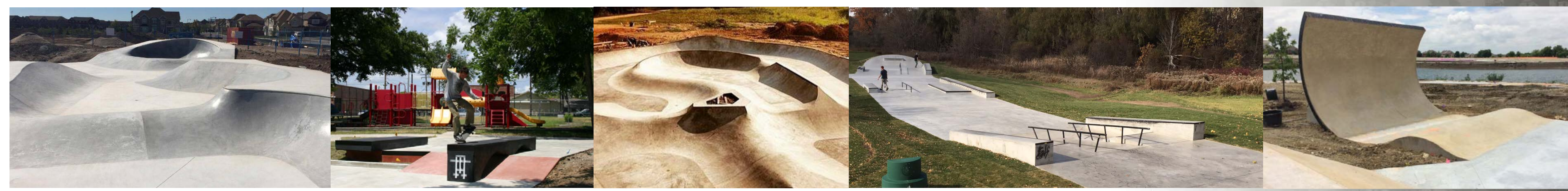
- 1** - TRANSITION/FLOW ZONE
- A** - 6'10" CLAMSHELL
- B** - 2' WATERFALLS
- C** - HIGH TO LOW COMBO BUMP
- D** - HIP BLASTERS TO VERT WALL
- E** - 8'6" VERT WALL WITH POOL COPING
- F** - 2' & 3'6" DOUBLE PUMP BUMP COMBO
- G** - 8'6" VERT WALL
- H** - 1'8" PUMP BUMP
- I** - DECK PUMP BUMP/ROLL-IN



Huxley Park Concept Plan 

- 2** - STREET RUN
- A** - 3' STARTING QUARTER PIPE
- B** - 4 STAIR RAIL, BANK, HUBBA & LEDGE COMBO
- C** - STRAIGHT LEDGE & FLAT BAR WITH SANDSTONE ROCK FLAT GAP
- D** - 6" MANUAL PAD & 1' LEDGE COMBO
- E** - OVERVERT TRANSITION "MALASPINA GALLERY"

Precedent Parks



Gabriola, BC

October 2017

www.newlineskateparks.com

www.spectrumskateparks.com

