

Nanaimo Regional District

1

General

Incorporated in 1967, the main economic drivers in the Nanaimo Regional District are forestry and the service sector. Population centres are the city of Nanaimo, Parksville, Qualicum Beach and Lantzville.

2

Population Estimates

Age Distribution

Annual Estimates					2011 Census			% Distribution, 2011 *	
Year	Nanaimo RD	% Change Prev. Year	BC	% Change Prev. Year	Nanaimo RD	Male	Female	Nanaimo RD	BC
2007	143,008	n/a	4,309,632	n/a	All ages	70,960	75,610	100.0	100.0
2008	145,891	2.0	4,384,047	1.7	0 - 14	9,805	9,270	13.0	15.4
2009	148,042	1.5	4,459,947	1.7	15 - 24	8,155	7,725	10.8	12.6
2010	149,643	1.1	4,529,647	1.6	25 - 44	14,360	15,220	20.2	26.3
2011	150,632	0.7	4,573,321	1.0	45 - 64	22,495	25,260	32.6	30.0
					65 +	16,155	18,135	23.4	15.7

Source: Statistics Canada (as of July 1, includes estimate of Census undercount)

* based on published totals, both sexes

2006 Census Profiles can be found on our Website at <http://www.bcstats.gov.bc.ca/census.asp>

3

Selected Census Characteristics

Characteristics	Nanaimo			British Columbia		
	2001	2006	% Change	% Change	2001	2006
Population	127,016	138,631	9.1	5.3	3,907,738	4,113,487
Population (by citizenship)	125,550	137,150	9.2	5.3	3,868,875	4,074,385
Non-immigrant	103,905	113,380	9.1	2.9	2,821,870	2,904,240
Immigrant	21,050	22,915	8.9	10.8	1,009,820	1,119,215
Labour force (15+ yrs.)	60,475	67,890	12.3	8.1	2,059,950	2,226,380
Employees	48,035	54,720	13.9	9.2	1,715,600	1,873,050
Self-employed	10,225	11,645	13.9	7.4	291,455	313,000
Participation rate [ppt.=percentage points]	58.0%	57.8%	-0.2 ppt.	0.4 ppt.	65.2%	65.6%
Unemployment rate	11.2%	7.0%	-4.2 ppt.	-2.5 ppt.	8.5%	6.0%
Total population 25 to 64 years	65,860	73,110	11.0	6.5	2,144,050	2,284,465
No certificate, diploma or degree	15,280	9,425	-38.3	-40.1	471,470	282,200
High school certificate or equivalent	14,160	19,770	39.6	27.7	462,925	591,275
Apprenticeship/trades certificate or diploma	11,525	11,150	-3.3	-7.4	295,180	273,450
College, CEGEP or other cert. or diploma	12,695	15,380	21.2	11.3	401,760	447,005
University certificate, diploma or degree	12,205	17,380	42.4	34.7	512,715	690,535
Bachelor's degree	6,340	8,155	28.6	23.0	282,800	347,715
Census families	37,675	41,860	11.1	6.9	1,086,030	1,161,420
Lone-parent families	5,930	5,975	0.8	4.0	168,420	175,165
Households	54,260	59,875	10.3	7.1	1,534,335	1,643,150
1-family households	36,850	40,370	9.6	6.1	1,012,925	1,074,850
Multi-family households	410	730	78.0	18.4	35,050	41,510
Non-family households	16,995	18,770	10.4	8.3	486,355	526,785
Median Income (2000 & 2005)	\$ 20,155	\$ 23,631	17.2	12.5	\$ 22,095	\$ 24,867
Males	\$ 27,121	\$ 30,760	13.4	9.0	\$ 28,976	\$ 31,598
Females	\$ 15,948	\$ 18,886	18.4	14.0	\$ 17,546	\$ 19,997
Median Family Income (2000 & 2005)	\$ 49,511	\$ 58,534	18.2	20.0	\$ 54,840	\$ 65,787
Economic Families	37,375	41,340	10.6	6.5	1,044,850	1,112,810
2001 Incidence, low income 2006 Prevalence, low income	12.3%	10.3%	-2.0 ppt.	-0.6 ppt.	13.9%	13.3%
Unattached persons, 15+	19,895	22,065	10.9	4.7	576,825	603,880
Incidence, low income	40.6%	36.8%	-3.8 ppt.	-1.4 ppt.	38.1%	36.7%
Population in private hh.	124,395	134,830	8.4	5.1	3,785,270	3,978,215
Incidence, low income	17.1%	15.1%	-2.0 ppt.	-0.5 ppt.	17.8%	17.3%
Dwellings	54,260	59,870	10.3	7.1	1,534,335	1,643,150
Owned	40,065	45,560	13.7	12.5	1,017,485	1,145,045
Rented	14,145	14,310	1.2	-3.6	512,360	493,995
Average gross rent	\$ 645	\$ 740	14.7	10.4	\$ 750	\$ 828
Average owners' payments	\$ 719	\$ 836	16.3	17.1	\$ 904	\$ 1,059
Avg. value, owned dwell.	\$ 166,442	\$ 340,700	104.7	81.5	\$ 230,645	\$ 418,703

Source: Statistics Canada. Notes: incomes are for 2005 and 2000; rent/owner's payments are restricted to non-farm, non-reserve private dwellings.

Nanaimo Regional District

4		Labour Force by Industry (NAICS)					
		Nanaimo			BC	% Distribution, 2006	
Industry		2001	2006	% Change	% change	Nanaimo RD	BC
Total labour force		60,480	67,890	12.3	8.1	100.0	100.0
Industry - Not applicable		1,985	1,270	- 36.0	- 26.6	1.9	1.5
All industries (Experienced LF)		58,490	66,615	13.9	8.9	98.1	98.5
111-112 Farms		730	585	- 19.9	5.2	0.9	1.8
113 Forestry and logging		855	885	3.5	- 10.0	1.3	1.0
114 Fishing, hunting and trapping		450	360	- 20.0	1.3	0.5	0.2
1151/2 Support activities for farms		30	55	83.3	11.3	0.1	0.1
1153 Support activities for forestry		285	275	- 3.5	- 21.5	0.4	0.3
21 Mining and oil and gas extraction		120	315	162.5	42.6	0.5	0.9
22 Utilities		275	315	14.5	- 3.4	0.5	0.5
23 Construction		4,230	6,645	57.1	39.9	9.8	7.5
31-33 Manufacturing		4,510	4,080	- 9.5	- 2.7	6.0	8.5
311 Food manufacturing		345	465	34.8	3.6	0.7	1.0
321 Wood product manufacturing		1,365	980	- 28.2	- 16.1	1.4	1.7
322 Paper manufacturing		915	745	- 18.6	- 13.5	1.1	0.6
41 Wholesale trade		1,880	1,995	6.1	11.6	2.9	4.1
44-45 Retail trade		8,550	9,370	9.6	6.9	13.8	11.2
441 Motor vehicle and parts dealers		905	960	6.1	9.0	1.4	1.1
445 Food and beverage stores		2,005	2,210	10.2	8.4	3.3	2.9
448 Clothing & clothing accessories		800	825	3.1	9.2	1.2	1.1
452 General merchandise stores		1,145	1,075	- 6.1	6.5	1.6	1.2
48-49 Transportation & warehousing		3,145	2,945	- 6.4	0.6	4.3	5.2
51 Information and cultural industries		1,335	1,465	9.7	- 5.3	2.2	2.6
52 Finance and insurance		1,810	2,120	17.1	4.5	3.1	3.8
53 Real estate & rental/leasing		1,290	1,805	39.9	22.1	2.7	2.3
54 Prof'sonal, scientific & tech. serv.		3,015	3,820	26.7	18.6	5.6	7.3
55 Mgmt. of companies/ent'prises		15	60	300.0	126.6	0.1	0.1
56 Admin+support, waste mgmnt srv.		2,680	3,435	28.2	20.4	5.1	4.4
61 Educational services		3,870	4,470	15.5	9.2	6.6	6.9
62 Health care and social assistance		6,390	7,420	16.1	6.5	10.9	9.6
71 Arts, entertainment and recreation		1,480	1,700	14.9	11.3	2.5	2.3
72 Accommodation and food services		5,320	5,805	9.1	7.7	8.6	8.1
721 Accommodation services		1,325	1,320	- 0.4	2.5	1.9	1.7
722 Food services & drinking places		3,990	4,490	12.5	9.2	6.6	6.4
81 Other services (excl. public admin.)		2,945	3,520	19.5	11.8	5.2	4.9
91 Public administration		3,290	3,175	- 3.5	- 2.0	4.7	5.0
Special Aggregations	Agriculture, Food and Beverage	1,085	920	- 15.2	5.8	1.4	2.9
	Fishing and Fish Processing	620	600	- 3.2	- 3.3	0.9	0.5
	Logging and Forest Products	3,420	2,890	- 15.5	- 14.7	4.3	3.7
	Mining and Mineral Products	580	825	42.2	17.1	1.2	2.1

Source: Statistics Canada. Industry according to NAICS version used in each census. Unpublished data.

5		Business Locations- Number of Firms by Employment Size Range								
		Firms with no employees		Firms with employees		% change	Nanaimo RD			
		Nanaimo RD	BC	Nanaimo RD	BC	Nanaimo RD	1 to 19	20 to 49	50-199	200 Plus
2008		6,060	185,879	5,357	175,003	-	4,818	384	132	23
2009		6,124	186,541	5,394	176,124	0.7	4,854	390	127	23
2010		6,318	194,349	5,375	175,913	- 0.4	4,819	395	139	22
2011		6,219	195,290	5,326	173,589	- 0.9	4,779	393	137	17

Source: Business Register, Statistics Canada. In some areas, boundary changes/geocoding changes may cause large changes.

6		Municipal Residential Taxes and Charges on a Representative House					
		Nanaimo					
		House Value		Taxes & Charges			
Year		\$	% change	\$	% change		
2007		n/a		n/a			
2008		n/a	n/a	n/a	n/a		
2009		n/a	n/a	n/a	n/a		
2010		n/a	n/a	n/a	n/a		
2011		n/a	n/a	n/a	n/a		

Index (2003=100.0)

— House Value

- - - Taxes & Charges

Source: Ministry of Community Development http://www.cd.gov.bc.ca/lgd/infra/statistics_index.htm (No RD level figures)

Nanaimo Regional District

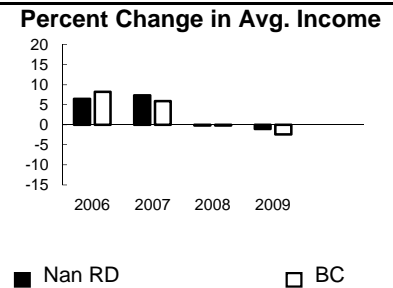
7	Values of Building Permits								
	Residential				Non-Residential		Total		Year
	Number of Units		Value \$'000		Value \$'000		Value \$'000		
Nanaimo RD	BC	Nanaimo RD	BC	Nanaimo RD	BC	Nanaimo RD	BC		
2007	1,540	40,932	305,726	8,611,723	103,837	3,932,968	409,563	12,544,691	2007
2008	1,318	30,110	287,311	6,899,289	59,775	3,677,866	347,086	10,577,155	2008
2009	797	18,607	170,287	4,491,075	58,751	3,138,810	229,038	7,629,885	2009
2010	1,045	28,984	211,898	6,705,888	73,789	3,017,921	285,687	9,723,809	2010
2011	1,244	25,745	245,725	6,113,406	58,377	3,136,361	304,102	9,249,767	2011

Source: Statistics Canada

Note: Detailed non-residential permits data can be found on our Website: www.bcstats.gov.bc.ca

A dash can indicate a nil report, a value of less than \$500, or non-reporting. P indicates 'preliminary'.

8	Personal Taxation Statistics					Percent Change in Avg. Income	
	Total Income of All Returns						
	Year	All Returns (number)		Average Income (\$)		% Change avg. income	
	Nan RD	BC	Nan RD	BC	Nan RD	BC	
2005	108,760	3,154,090	33,064	35,601	n/a	n/a	
2006	109,440	3,165,750	35,185	38,523	6.4	8.2	
2007	114,100	3,287,750	37,773	40,802	7.4	5.9	
2008	117,410	3,383,640	37,694	40,736	-0.2	-0.2	
2009	118,060	3,406,860	37,289	39,754	-1.1	-2.4	



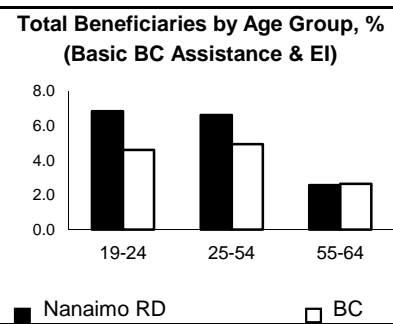
Taxation data available at: <http://www.bcstats.gov.bc.ca/data/dd/income.asp>

9	Source of Total Income 2009				% Distribution, Total Income							
	Nan RD		BC									
	\$Thousands	% of Total	% of Total									
Employment	2,291,602	52.1	63.7	Employment	52.1	63.7	Investment	9.9	9.8	Self-Emply'd	4.9	5.3
Pension	1,088,910	24.7	13.8	Pension	24.7	13.8	Other	6.1	5.3	Other	6.1	5.3
Investment	435,109	9.9	9.8	Investment	9.9	9.8	Tax Exempt	2.4	2.0	Tax Exempt	2.4	2.0
Self-Employed	214,831	4.9	5.3	Self-Employed	4.9	5.3	Total	4,402,333	100.0	Total	4,402,333	100.0
Other	267,424	6.1	5.3	Other	6.1	5.3						
Tax Exempt	103,829	2.4	2.0	Tax Exempt	2.4	2.0						
Total	4,402,333	100.0	100.0	Total	100.0	100.0						



Source: Canada Revenue Agency. Areas are defined by postal codes and may not match municipal boundaries.

9	Dependency on the Safety Net						Total Beneficiaries by Age Group, % (Basic BC Assistance & EI)		
	Percentage of Population by Age Receiving Benefits - September 2009								
	Age Group	BC Basic* Income Assistance Recipients (%)		Employment Insurance Beneficiaries (%)		Total of BC Basic Income Assistance & EI Beneficiaries (%)			
Nanaimo RD		BC	Nanaimo RD	BC	Nanaimo RD	BC			
Under 19	4.5	2.7					19-24	6.8	4.6
19-24	4.1	2.1	3.0	2.6	6.8	4.6	25-54	6.6	4.9
25-54	3.3	1.9	3.4	3.1	6.6	4.9	55-64	2.6	2.6
55-64	0.8	0.7	1.8	2.0	2.6	2.6			
19-64	2.7	1.7	2.9	2.8	5.5	4.4			



* On temporary assistance only. Excluded are those on Continuous Assistance, aboriginals living on reserve, seniors/OAS, & children living with relatives.

Source: BC Stats (using administrative files from the BC Ministry of Housing & Social Development, and Human Resources & Social Development Canada)

Note: EI Beneficiaries reports now include regular, fishing and employment benefits, work sharing and support measures. The reports exclude sickness, maternity and parental benefits.

10	Business Formations and Failures								
	Incorporations			Bankruptcies					
	Number		Year	Nanaimo		Vancouver Island/Coast DR		BC	
Nanaimo RD	BC	Business		Consumer	Business	Consumer	Business	Consumer	
2007	790	34,036	2005	12	226	n.a.	n.a.	786	8,168
2008	716	30,085	2006	7	198	80	1,368	585	7,020
2009	579	26,431	2007	4	202	70	1,410	470	6,651
2010	610	30,305	2008	13	221	94	1,495	454	7,293
2011	622	30,844	2009	3	313	80	2,179	380	10,639

Source: BC Ministry of Finance

Source: Office of the Superintendent of Bankruptcy, Government of Canada

Incorporations are counted in municipality of the registered office address which may differ from the actual business location.

Note: Bankruptcy is by urban postal code forward sortation area and is counted where it is filed.