



ELECTORAL AREA H OFFICIAL COMMUNITY PLAN DRAFT

MAP NO. 2 ENVIRONMENTAL FEATURES AND PROTECTED AREAS

Legend

- Eagle Tree
Source: Wildlife Tree Service 2016
- Great Blue Heron Colonies
Source: Province of BC 2016
- Watercourses
- Electoral Area H Official Community Plan Area Boundary
- Wetlands, Ducks Unlimited
- Wetlands, Fresh Water Atlas
- Old Growth Management Areas
- Bowser Ecological Reserve
- Coastal Douglas Fir Land Use Order (Crown Land)
- Electoral Area Boundary
- Village Centres
- Qualicum First Nation

Significant Environmental Features of Village Areas

- Miscellaneous
- New ESA/SEI
- Veteran Tree
- Stream (Estimated)
- Dunes
- Lodgepole Pine Forest
- Wetland

SOURCE: M.Mather & T. Giesbrecht, 2002. Biophysical analysis of village nodes in electoral area H.

Sensitive Ecosystems Inventory

- Coastal Bluff**
Vegetated rocky islet, rocky shoreline/grassland, rocky shoreline/moss; coastal cliff.
- Terrestrial Herbaceous**
Natural grasslands or bryophyte-dominated vegetation, including rock outcrop/grassland and rock outcrop/moss types >20% shrub cover.
- Older Forest**
Forest ecosystem with dominant age class > 100 years; coniferous, mixed with broadleaf component > 15 %.
- Riparian**
All stages of floodplain vegetation including riparian vegetation associated with gullies.
- Sparsely Vegetated**
Ecosystems with sparse vegetation; cliff, sand dune, spit.
- Wetland**
Ecosystem with wet soil and moisture-dependent plants; bog, fen, marsh, swamp, shallow water, wet meadow.
- Woodland**
Open woodlands (stands of Garry oak, and mixed stands of Garry oak/Arbutus, Garry oak/Douglas-fir, Arbutus/Douglas-fir).

Areas With General Biodiversity Values

- Seasonally flooded agricultural field**
 - Second Growth Forest**
Forested ecosystem with dominant age class 60 - 100 years; coniferous, mixed with broadleaf component > 15 %.
- NOTE: The Sensitive Ecosystem Inventory of East Vancouver Island and Gulf Islands was produced by Environment Canada and the BC Ministry of Environment, Lands and Parks. Major funding was provided by Environment Canada and the Habitat Conservation Trust Fund.
- Source: Sensitive Ecosystems of East Vancouver Island and Gulf Islands. Environment Canada and the BC Ministry of Environment, Lands and Parks.

Chairperson

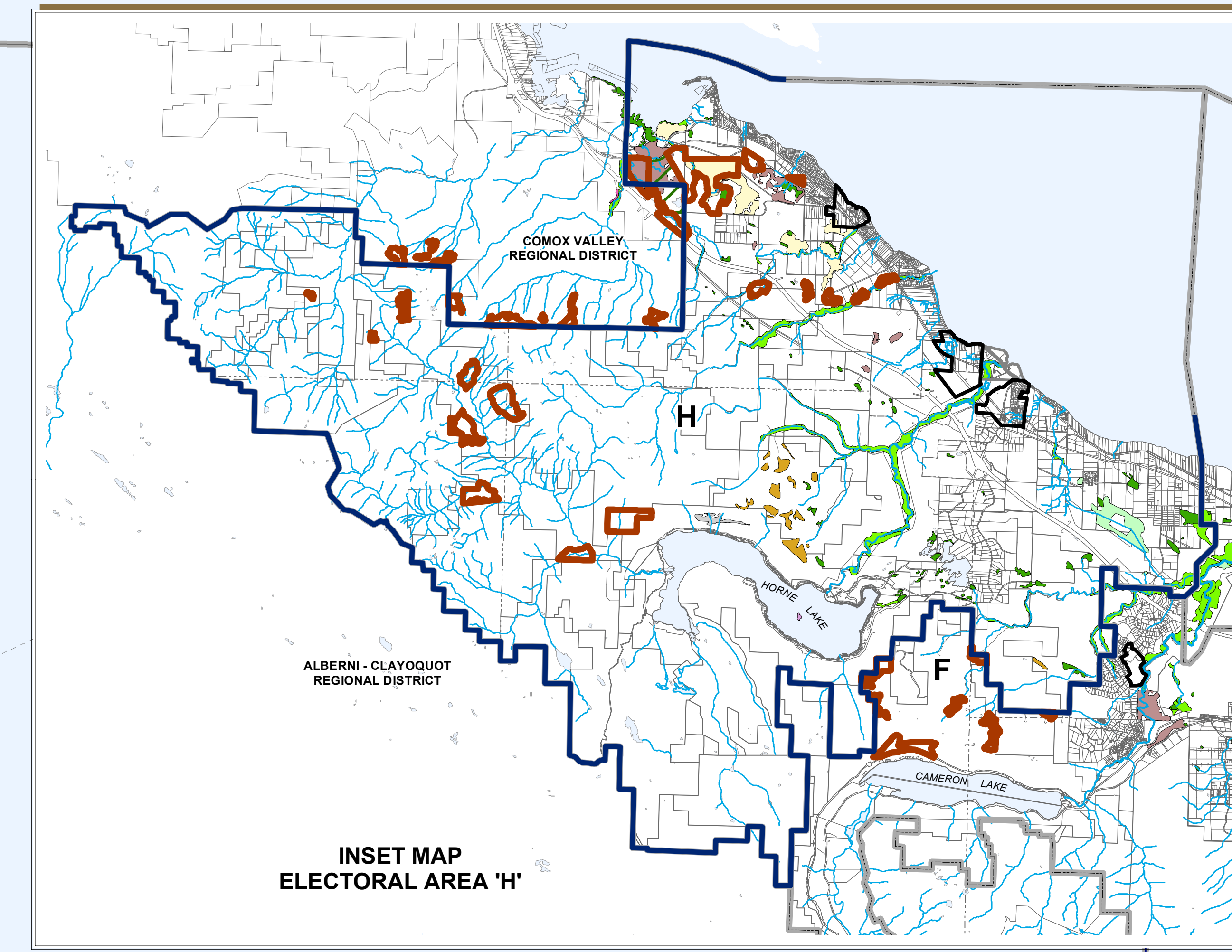
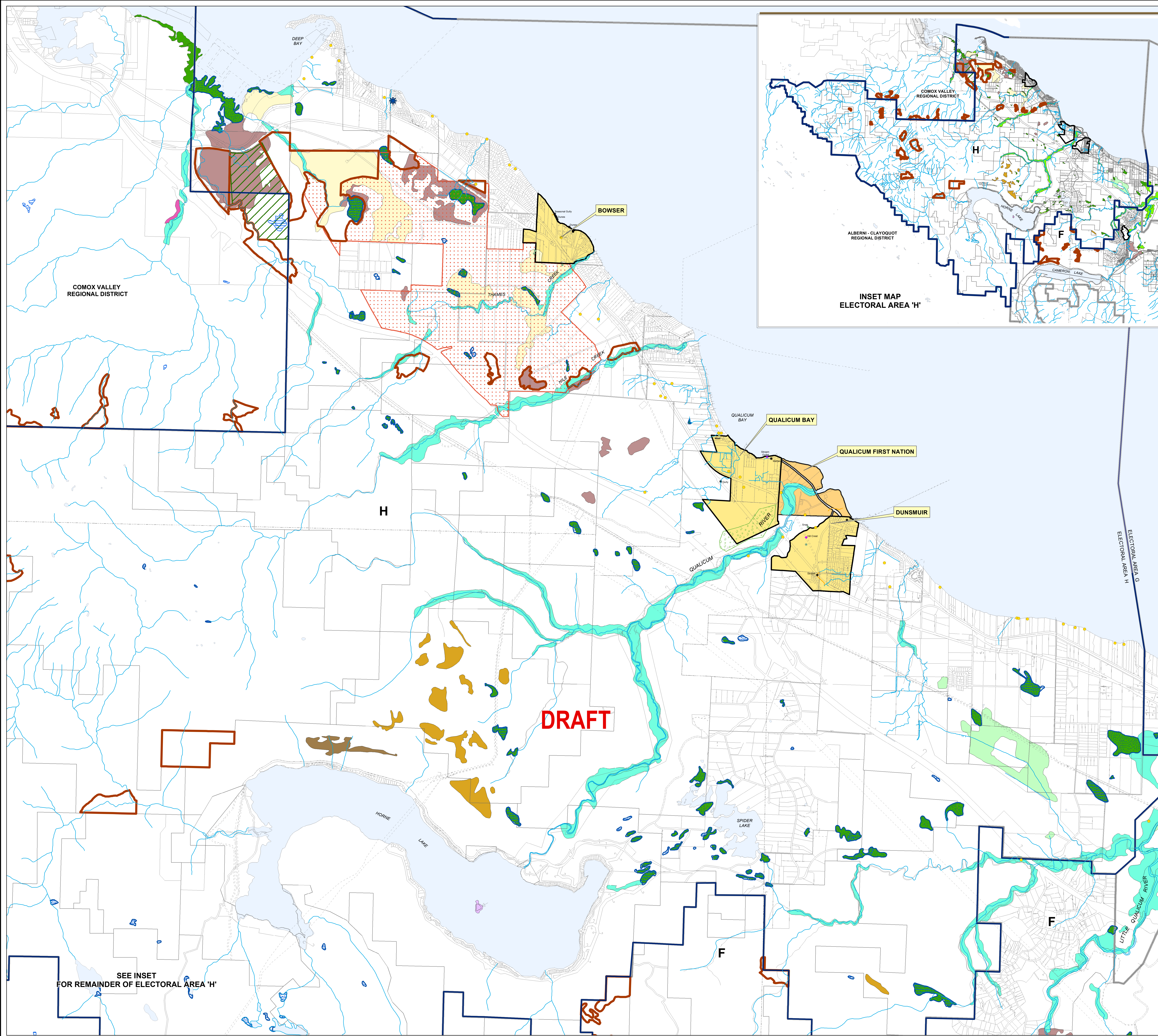
General Manager, Corporate Services

BYLAW NO. xxxx 2017



0 250 500 1,000 1,500 2,000 Meters

June 27, 2017



SEE INSET FOR REMAINDER OF ELECTORAL AREA 'H'