

**REGIONAL DISTRICT OF NANAIMO**

**REGIONAL PARKS AND TRAILS SELECT COMMITTEE  
REGULAR MEETING  
TUESDAY, NOVEMBER 1, 2016  
12:00PM**

*(RDN Committee Room, 6300 Hammond Bay Road, Nanaimo)*

**A G E N D A**

**PAGES**

**CALL TO ORDER**

**DELEGATIONS**

*Motion to receive late delegation.*

**MINUTES**

3-6 Minutes of the Regular Regional Parks and Trails Advisory Committee meeting held September 20, 2016

*Motion to approve Minutes.*

**BUSINESS ARISING FROM THE MINUTES**

**COMMUNICATIONS/CORRESPONDENCE**

*Motion to receive Communications/Correspondence*

**UNFINISHED BUSINESS**

**REPORTS**

7-13 Monthly Update of Community and Regional Parks and Trails Projects –September 2016

14-19 Horne Lake Historic Regional Trail Report

*Motion to receive Reports.*

**BUSINESS ARISING FROM DELEGATIONS OR COMMUNICATIONS**

**NEW BUSINESS**

Descanso Bay Regional Park Operator

**IN CAMERA**

*That pursuant to Section 90(1) (e) of the Community Charter the Committee proceed to an In Camera Committee meeting to consider items related to land issues.*

**ADJOURNMENT**

*Motion to adjourn.*

**NEXT MEETING**

***TBD***

**REGIONAL DISTRICT OF NANAIMO**

**MINUTES OF THE  
REGIONAL PARKS AND TRAILS SELECT COMMITTEE MEETING  
HELD ON TUESDAY SEPTEMBER 20, 2016  
12:00 PM  
(RDN COMMITTEE ROOM)**

**Attendance:** Director Haime, Chair, District of Lantzville  
Director McPherson, Electoral Area 'A'  
Director Houle, Electoral Area 'B'  
Alternate Director Pinker, Electoral Area 'C'  
Director Rogers, Electoral Area 'E'  
Director Fell, Electoral Area 'F'  
Director Stanhope, Electoral Area 'G'  
Director Westbroek, Town of Qualicum Beach  
Director Lefebvre, City of Parksville  
Director Thorpe, City of Nanaimo  
Director Hong, City of Nanaimo

**Staff:** Tom Osborne, General Manager of Recreation and Parks  
Wendy Idema, Director of Finance  
Wendy Marshall, Manager of Park Services  
Tyler Brown, Intergovernmental Liaison  
Ann-Marie Harvey, Recording Secretary

**Regrets:** Director Pratt, City of Nanaimo  
Director Yoachim, City of Nanaimo  
Director Young, Electoral Area 'C'  
Director Veenhof, Electoral Area 'H'

---

**CALL TO ORDER**

Chair Haime called the meeting to order at 12:03pm.

**DELEGATIONS**

**Chief Edwards, Chris Edwards, Mark Stevens, Director of Operations - Snaw-Naw-As First Nations**  
RE: Wallace Point, Nanoose Bay

Chief Edwards gave a history of the Snaw-Naw-As First Nations use of Wallace Point. He requested a letter of support to the Federal Government in support of allowing use of CFMETR lands at Wallace Point as public park space.

**MINUTES**

MOVED Director Houle SECONDED Director Thorpe that the Minutes of the Regular Regional Parks and Trails Select Committee meeting held June 7, 2016 be adopted.

CARRIED

**BUSINESS ARISING FROM THE MINUTES**

None

## **COMMUNICATIONS/CORRESPONDENCE**

None

## **REPORTS**

### **Monthly Update of Community and Regional Parks and Trails Projects –June-August 2016**

Ms. Marshall answered questions from the directors regarding items in the report.

MOVED Director Lefebvre, SECONDED Director Westbroek that the Monthly Update of Community and Regional Parks and Trails Projects June – August be received.

CARRIED

### **Coats Marsh Bats Recovery Strategy Report**

MOVED Director Westbroek, SECONDED Director Lefebvre that the Board direct staff to allocate \$5,000 in the 2017 Regional Parks Budget to complete an environmental assessment of the cabin at Coats Marsh Regional Park to determine if the structure provides critical bat habitat and to determine mitigation measures to implement with the planned decommissioning of the structure if the building is found to provide critical bat habitat.

CARRIED

### **Mt. Benson Regional Park / Witchcraft Lake Regional Trail Parking Report**

MOVED Director McPherson, SECONDED Director Thorpe that the Board direct staff to continue to explore a long-term parking solution for Mount Benson Regional Park and the Witchcraft Lake Regional Trail.

CARRIED

### **Benson Creek Falls Regional Park Parking Report**

MOVED Director Houle, SECONDED Director Thorpe that the Creekside Place parking lot remain open as the primary access and trailhead parking area for Benson Creek Falls Regional Park from the south.

CARRIED

MOVED Director Houle, SECONDED Director Thorpe that the Board direct staff to continue to monitor the Creekside Place parking lot and maintain open communication with the residents of the area regarding issues and mitigation measures.

CARRIED

MOVED Director Houle, SECONDED Director Thorpe that, pending lease renewal with the Province of BC, staff be directed by the Board to examine the feasibility of developing a parking lot within the undeveloped road allowance leading towards Benson Creek Falls Regional Park from Weigles Road, and that staff examine formalizing the loop trail through the crown woodlot W0012.

CARRIED

MOVED Director Houle, SECONDED Director Thorpe that, pending lease renewal with the Province of BC, staff be directed by the Board to engage the services of a geotechnical and structural engineer to assess the feasibility and design options for pedestrian access across Benson Creek and to the base of Ammonite Falls, as per the Management Plan.

CARRIED

MOVED Director Houle, SECONDED Director Thorpe that, pending lease renewal with the Province of BC and evidence of parking demand/capacity requirements at the Jameson Road trailhead, staff be directed by the Board to present long-term options for consideration of developing additional parking at this site, under permit with MOTI, or at the end of Longview Place or Galloway Gulch, under agreement with the Province and the operators of the Vancouver Island University crown woodlot W0020.

CARRIED

### **Regional Parks Parcel Tax Review Report**

MOVED Director Westbroek, SECONDED Director Fell that the Board maintain the parcel taxation at its current level and the use of Parcel Tax for the Regional Parks Acquisition and Development Fund be deferred to the Regional Services Review and budget discussions.

CARRIED

### **Salish Sea Marine Trail Proposal BC Marine Trails Network Association Report**

MOVED Director Rogers, SECONDED Director Westbroek that the Board direct staff to continue to show support for the concept of marine trails.

CARRIED

MOVED Director Westbroek, SECONDED Director Houle that the Board direct staff to work with the BC Marine Trails Network Association on developing, for Board approval, a partnership agreement that establishes Descanso Bay Regional Park as a Salish Sea Marine Trail camping site.

CARRIED

MOVED Director Westbroek, SECONDED Director Rogers that consideration of the Nelson Road Boat Launch (Area 'A') and Blueback Community Park (Area 'E') as Salish Sea Marine Trail access points be referred to the Electoral Area 'E' Parks and Open Space Advisory Committee and the EA 'A' Parks, Recreation & Culture Commission for further discussion.

CARRIED

### **Trans Canada Trail IT Licence Renewal Report**

MOVED Director Thorpe, SECONDED Director Westbroek that the Board accept Island Timberland's offer to renew the Region's non-exclusive licence permitting approximately 16 km of Trans Canada Trail.

CARRIED

### **BUSINESS ARISING FROM THE COMMUNICATIONS/CORRESPONDENCE/DELEGATONS**

MOVED Director Lefebvre, SECONDED Director Rogers that the Board direct staff to prepare a report with respect to the history of Wallace Point and work in conjunction with the Snaw-Naw-As First Nation to support the use of Wallace Point as a public park.

CARRIED

**NEW BUSINESS**

**Horne Lake Historic Regional Trail**

Mr. Osborne gave a summary of the history of the Horne Lake Historic Regional Trail area to the Committee. Ms. Marshall explained some of the work that would be involved to develop the trail.

MOVED Director McPherson, SECONDED Director Houle that the following motion - That the Board direct staff to work with Directors and commence planning work for the Historic Horne Lake Regional Trail including meeting with Alberni-Clayoquot Regional District, Horne Lake Strata, Qualicum First Nation, and First Nation communities in the Alberni Valley and that the trail's development costs be included the Regional Parks and Trails Five Year Financial Plan - be referred to staff to report back with cost and resource implications.

CARRIED

**IN CAMERA**

MOVED Director Lefebvre, SECONDED Director Houle that pursuant to Section 90(1) (e) of the Community Charter the Committee proceed to an In Camera Committee meeting to consider items related to land and legal issues.

Time: 1:55pm

CARRIED

**ADJOURNMENT**

MOVED Director Houle that the meeting be adjourned at 2:17pm.

CARRIED

---

Chairperson

---

**TO:** Tom Osborne  
General Manager of Recreation & Parks

**DATE:** October 6, 2016

**FROM:** Wendy Marshall  
Manager of Park Services

**MEETING:** D69 Recreation Commission  
All POSAC's, RPTSC, EA Service Committee

**FILE:**

**SUBJECT: Parks and Trails Projects Update Report- September 2016**

---

**RECOMMENDATION**

That the Parks and Trails Projects Update Report for September 2016 be received as information.

**Regional and Community Parks and Trails**

During the month of September staff have been involved with the following projects and issues.

**Electoral Area Community Parks**

**Area A**

The contract for two shelter / kiosk structures at Cedar Plaza was awarded to Pickles Timber Frames who will be completing the work by December 31, 2016. A project start-up meeting was held on September 26. A planting design for the plaza was completed for installation following plaza structure construction. A landscape crew was contracted for the future planting work and to remove invasive species along a section of the Morden Colliery Regional Trail at Cedar Plaza.

Staff submitted a request to the North Cedar Improvement District for a water connection at Cedar Plaza for plant irrigation.

Staff attended a site meeting with the General Contractor, project biologist and geotechnical engineer to discuss the public access stair design which is to be incorporated into the construction of the foreshore revetment at 1954 Shasta Road. Under condition of an approved Development Permit with Variance, there is a requirement that the applicant construct a safe and appropriate public beach access along the portion of the revetment in the unconstructed road right-of-way. The new steps will replace the existing rough steps that lead down the bank to the beach. Construction is expected to be completed by the end of October.

Staff prepared and distributed the September 21<sup>st</sup> Electoral Area 'A' Parks, Recreation and Culture Commission meeting agenda package, attended the meeting and prepared the meeting minutes.

Operations staff removed fire pits at Nanaimo River Canyon Community Park and machine graded the area.

Operations staff have been contending with an increase of litter and vandalism at the Cedar Skate Park since early September when school resumed. In addition staff graded the parking area and repaired the vandalized electrical box.

### ***Area B***

Staff prepared and distributed the September 19<sup>th</sup> Electoral Area 'B' Parks and Open Space Advisory Committee (POSAC) meeting agenda package, attended the meeting and reviewed the meeting minutes.

A new portable toilet was installed at Huxley Community Park.

Improvements were made to the privacy surround at Joyce Lockwood Community Park, and staff also installed a concrete garbage can at the site.

Fencing was removed at Rollo McClay in the vicinity of the well head, and the park's security camera was monitored. Staff continued to liaise with the RCMP regarding ongoing vandalism at this site. Two more incidents of vandalism occurred in September, requiring the painting over of a large amount of graffiti. The irrigation system was winterized, and the concession service is now closed for the season.

Improvement work continues underway along the trails linking the Whalebone area Community Parks. The development of a small pedestrian bridge and improved signage is scheduled for October. Staff also met with an arborist and tree faller regarding the removals of a small clump of Maples along the Whalebone trails.

The new Dodd Narrows Community Park (Mudge Island) was purchased and added to the Electoral Area's park inventory as of September 30.

### ***Area C – Extension***

A memorial sign was installed at Extension Community Park; the sign text and graphics were completed by staff and the sign base was designed and installed by community volunteer, Gary Britt. Staff installed a new seating bench at the park and ongoing brushing and other maintenance work is being conducted by Brenda Britt.

### ***Area C – East Wellington / Pleasant Valley***

A horticulture crew was contracted for Meadow Drive Community Park to complete grass seeding following picnic shelter installation and pruning of existing park trees.

A horticulture crew was contracted for Anders and Dorrit's Community Park to complete biannual pruning and weeding near the park entrance.

### ***Area E***

A plant restoration plan for Carmichael Community Park was completed by staff and submitted to the Fairwinds Golf Club who will be completing the planting in October.

Staff revised the construction drawings for Blueback Community Park to reflect the site alterations that resulted from the site drainage works completed last spring. Park upgrades are scheduled to be completed this fall.

At Stone Lake Drive Community Park staff removed a large tree from pond with the Water Services Department's excavator and operator and repaired the fence.



### ***Area F***

Staff met with Planning staff and the developer's agent to discuss proposed changes to the Springhill Road rezoning application. The final rezoning application is expected to propose a subdivision layout which includes park land dedication. This proposal will be brought forward to the Area F POSAC for comment.

Staff installed a new bear proof garbage can at Errington Elementary School Community Trail and conducted park maintenance work at Meadowood Community Park.

Trail re-alignment work is underway along a rear portion of the Errington Farmers Market, with surfacing to be completed in October. Additional work undertaken in the park included; brushing of trails, building rooftops were cleaned off, and new signage was posted.

### ***Area G***

Consultants were selected to design the first phase of the Stanhope Trail, which will link the end of Wally's Way with Ackerman Road. Development is anticipated for the spring of 2017.

Staff responded to a call reporting illegal dumping in the Lee Road area.

### ***Area H***

Staff organized and held a second Park Open House at Dunsmuir Community Park as part of a master planning process for the park. The first open house held in September 2015 asked the community to provide ideas for the park, and at the second open house held on September 16<sup>th</sup> concept plans were presented and community members were asked to complete a brief questionnaire. The questionnaire was also made available to the public via the RDN website. A summary of the public input will be presented at the next Area H POSAC meeting and staff will prepare preferred concept plans.

Operations staff carried out brushing and cleanup to areas of Dunsmuir Community Park in advance of the open house.

Operations staff corrected a drainage culvert and resurfaced a trail section located at Henry Morgan Community Park.

Park staff assisted Planning staff with input on trail building costs as part of the Active Transportation Plan and OCP work, and Ministry of Forest Lands and Natural Resource Operations staff on their Official Community Plan input.

## **Community Works Projects**

### ***Area B***

#### ***Village Way***

Staff met with Ministry of Transportation and Infrastructure (MoTI) staff to review parameters for moving forward with works within the North Road right of way. Staff met with the consulting project engineer and initiated a conceptual review of what could be accomplished given the new parameters and the lay of the land.

## **Area E**

### ***Oak Leaf Community Park***

Improvements at Oak Leaf Community Park have begun with the installation of a toilet and garbage can and widening of the existing parking lot. A new trail was also created to provide a forest loop. Construction will continue this fall.

## **Regional Significant Gas Tax Project**

### ***Coombs to Parksville Rail Trail***

Staff held several site visits to review construction issues including landscaping and maintenance, trail encroachments, gravel surfacing and design of the Springwood section. The Parksville Golden Oldies Sports Association and Greater Nanaimo Cycling Coalition, as well as local equestrians, assisted in the testing of surface gravels. Staff, working with RDN Utilities, arranged for light arm to be added to hydro pole by Church Rd crossing and have made arrangements for the installation of pedestrian controlled beacons at the Church Rd crossing and the Hwy 4A crossing at Station Rd.

A site meeting was held with the contractor, RCMP and RDN Bylaw Enforcement to review significant thievery and vandalism issues along trail construction corridor, as well as enforcement of new Off Road Vehicles Act legislation. Staff will work with RDN Communications and Bylaw staff on an Off-Road Vehicles communication strategy.

The construction of the trail is over 50 per cent complete and on target for public use by Christmas 2016.

## **Regional Parks and Trails**

### ***Beachcomber Regional Park***

A biologist was contracted to carry out a species inventory and environmental assessment in preparation for park management plan development.

### ***Benson Creek Falls Regional Park***

Operations Staff have started work on a section of trail realignment within the park, to prevent a trespass condition onto private property, currently occurring with the original trail.

### ***Descanso Bay Regional Park***

Staff liaised with the park operators and an arborist regarding hazard tree issues, and received a request for new signage. This will be ordered and posted throughout the fall. The hazard tree is scheduled for removal in October.

With the sad news of the passing of the Camp Ground Operator, Jim Demler, staff visited the site to help with operation issues. Staff are working closely with the Operator's wife to ensure park operations continue. Longer term plans will be discussed in the coming weeks.

### ***Englishman River Regional Park***

Staff assisted the BC Conservation Foundation with temporary storage of large woody debris at the park gravel pit. The wood will be used in habitat enhancement along the river and side channel. The park hatchery manager initiated the annual transfer of Quinsam hatchery pink eggs to the park hatchery for incubation and eventual release into the Salish Sea in the spring.

The park was inspected and garbage cleaned up on a weekly basis.

### ***Horne Lake Regional Trail***

Staff consulted with a surveyor about locating the 1911 Gazetted Horne Lake and Alberni Road and initiated work planning for the trail. The Horne Lake Regional Trail will link the Big Qualicum River Regional Trail to the RDN-Alberni Clayoquot Regional District boundary following the Historic Horne Lake Trail (from the Salish Sea at the Qualicum First Nation to First Nations lands in Port Alberni).

### ***Little Qualicum River Regional Park***

Preparations for bridge replacement over the Little Qualicum River continue. Low river levels in August provided the opportunity for a geotechnical assessment of the existing bridge footings. The assessment revealed significant scour (undermining) of the pier footing located in the river bed. Additional remediation is required to underpin and support the existing pier footings. Herold Engineering has reviewed the Geotechnical findings, and has provided updated cost estimates for engineering services and construction budget.

Staff also continued work keeping two culverts cleared of beaver debris on a weekly basis to allow for proper water flow and to avoid erosion and damage to the road infrastructure of the property. Garbage was constantly being cleaned up and removed during the weekly visits.

Staff also liaised with the BC Conservation Federation regarding park access for upcoming work in the channel maintaining large, woody debris installations.

### ***Moorecroft Regional Park***

Staff provided a draft agreement to a local area Strata for review regarding formalizing a pedestrian trail into the west side of Moorecroft over the Strata's common property.

Staff briefly met with representatives from the Nature Conservancy of Canada, who were at the park to undertake the annual covenant monitoring.

Preparations for demolition of the Caretakers house and Kennedy Hall are underway. Tenders for demolition of the Caretakers House are currently being received and building permits for the demolition have been issued. The Archeology Branch is moving forward with our Site Alteration Permit for Kennedy Hall and we may receive the permit sooner than expected. The house is expected to be removed near the end of October, and Kennedy Hall is expected to be removed near the end of November.

With the departure of the on-site caretaker, Footprints Security has been hired to provide gate service along with foot patrol to the beach area on a daily basis.

### ***Morden Colliery Regional Trail***

Staff continued to work with project consultants, the Province and the Agricultural Land Commission on planning and design initiatives related to the bridge and trail development over the Nanaimo River.

### ***Mount Benson Regional Park***

Staff contacted individuals interested in organizing a fundraising running event up Mount Benson which will be discussed further at a meeting in early October.

The Nanaimo & Area Land Trust (NALT) submitted its first conservation covenant monitoring report. Staff have reviewed the report and will meet with NALT in October to discuss the next steps.

Operations staff conducted brushing and clearing operations of overgrown alder along the Te'tuxw'tun roadway trail

**Mount Arrowsmith Massif Regional Park**

Staff sought and received costing information for planned trail improvements on the mountain. This work is being budgeted for in 2017.

**Nanaimo River Regional Park**

A graphic designer has been retained to produce attractive and educational signage to display in the research forest at Nanaimo River Regional Park. Staff have been coordinating and meeting with the managers of the research forest regarding content and photos for the signs.

Operations staff removed a section of collapsed and dilapidated wire fencing along the N.W. boundary.

**Top Bridge Regional Trail**

Seasonal signage was updated throughout the park and an incident of gate vandalism was dealt with.

**Trans Canada Trail**

Staff met with the City of Nanaimo Parks and then joined representatives from Trans Canada Trail (TCT) national and BC groups for a meeting of Vancouver Island TCT operators in order to review progress on closing the gaps for the TCT's 25<sup>th</sup> anniversary in 2017. The TCT representatives confirmed that MoTI will be permitting TCT signage along roadways. Plans for the 2017 celebration of the trail were also discussed.

**Witchcraft Lake Regional Trail**

Trail counter data was collected for the month of September on this popular hiking route. Trail marker 1 is located near the boardwalk and trail marker 10 is located further up the Regional Trail. Number should be divided by 2 for proper numbers as people will walk past it twice during their hike.

Site Name	Mon	Tue	Wed	Thu	Fri	Sat	Sun
Witchcraft at trail marker #1	94.5	87.0	72.0	96.5	84.8	127.8	224.5
Witchcraft at trail marker #10	76.5	59.7	41.0	61.0	57.8	95.5	192.8
<b>Daily Averages</b>	86	73	57	79	71	112	209

**Miscellaneous**

Staff developed the 2017 budgets for Community and Regional Parks.

Staff coordinated agenda packages in preparation for up-coming fall POSAC meetings.

Staff assisted with the relocation of files and furniture to the Parks office on Springhill Road following the filling of a new part-time secretary position.

Staff participated in a UBCM's conference call update on the new Off-Road Vehicle Act.

Staff continued to work with the Mount Arrowsmith Biosphere Region on its Amazing Places project; the public nomination process closed at month's end.

Staff received and reviewed a draft partnership agreement concerning the BC Marine Trail Association and its Salish Sea Marine Trail initiative.

Staff continued to assist the Nanaimo Mountain Bike Club in its efforts to secure tenure over trail within the VIU/Crown woodlot below Mount Benson.

Participated in MIA webinar on bike park and trail liability and risk management.

### **Park Use Permits and Events**

#### Area A

- Concluded work with the Nanaimo Skateboard Association on their mid-September fundraiser at the Cedar Skatepark. Obtained volunteer traffic management assistance from JSK Traffic Services (Cedar). Successful event held.

#### Area C

- Continued to work with the Vancouver Island Mental Health Association on a limited invitation only pilot fundraising hike involving the Witchcraft Lake Regional Trail and Mount Benson Regional Park.
- Liaised with RDN Emergency Planning, Communications and Nanaimo SAR on halting a social media campaign to run an unauthorized fundraising hike up Mount Benson focused on child participants; negative community response from many sources saw the initiative cancelled.

#### Area E

- Liaised with Nanoose Elementary School regarding the start of another year of outdoor learning at Moorecroft Regional Park. Briefed the School on upcoming building demolitions and removal of second toilet for the winter.

#### Area F

- Began work with the Corcan Meadowood Residents Association concerning their 6<sup>th</sup> Annual Hallowe'en event at Meadowood Community Park. Liaised with the Dashwood Volunteer Fire Department on permit conditions.

#### Area G

- Concluded park use permit to the Mid Vancouver Island Habitat Enhancement Society for use of the Englishman River Regional Park Clay Young Side Channel as site for mid-Island streamkeepers training.
- Permitted annual fall monitoring of Side Channel water quality by VIU/DFO initiated and usual RDN contribution to laboratory costs confirmed.

#### Area H

- Worked with the Oceanside Community Arts Council on their Tidal Treasures tourism and arts promotion program involving glass balls left to be found along beach stretches. Identified the Sunnybeach Road water access as a good initial candidate. Assisted Council with the identification of potential locations and what landowners and managers to contact for permissions and directions.



---

Manager of Parks Services



---

General Manager Concurrence

---

**TO:** Regional Parks and Trails Select Committee      **DATE:** October 26, 2016

**FROM:** Joan Michel  
Parks and Trails Coordinator      **MEETING:** RPTSC- November 1, 2016

**SUBJECT:** Developing the Horne Lake Regional Trail      **FILE:**

---

### RECOMMENDATIONS

1. That the Regional District resume planning and development of the approximately 12 km Horne Lake Regional Trail with the goal to complete a footpath standard trail by 2020.
2. That the Regional District work with the Qualicum First Nations, the Alberni Clayoquot Regional District and Port Alberni First Nations to obtain Provincial recognition of a Sea to Sea, First Nation to First Nation BC Heritage Trail across Vancouver Island via Horne Lake by 2020.

### PURPOSE

To review the planning and development steps required to complete 12 km of Horne Lake Regional Trail (see Map 1), and revisit the Region's overarching 2001 bid to the Province for a tide-water to tide-water BC Heritage Trail across Vancouver Island via Horne Lake (see Map 2).

### BACKGROUND

In 2001, during the final stages of approving the rezoning of lands surrounding Horne Lake, the Ministry of Transportation was dealing with the partial closure of the 1911 Gazetted Horne Lake and Alberni Road along the north shore of Horne Lake. Originally surveyed between the Qualicum First Nation Reserve and Port Alberni, the 1911 Road was never completely developed. Over time large parts of the surveyed route were lost from the land records. By 2001, it was discovered that Horne Lake Road could only be identified legally within Port Alberni, in some places around the west and north sides of Horne Lake, and from Horne Lake east to the Salish Sea. In between, and crossing large tracks of private forest lands, the 1911 Road exists but was not well documented at Land Titles.

To conclude the 2001 rezoning of the Horne Lake lands, which produced Horne Lake Regional Park, the Ministry needed to close remnant 1911 Horne Lake and Alberni Road along the north shore of Horne Lake. For the Qualicum First Nation (QFN), this proposed public road closure would constitute a break in the historic passage way between east and west coasts of Vancouver Island, an important trade route that the Hudson Bay Company sent Adam Horne to find in 1856. To obtain QFN sign-off on the partial closure of the 1911 Road, the RDN committed to preserve and celebrate the historic east-west trans Vancouver Island passage through the regional trail corridor. All players involved in the rezoning – Department of Fisheries and Ocean, the newly forming Horne Lake Strata, developer Texada along with the QFN – agreed and rezoning was achieved. Further, the Strata committed to permitting the RDN to

place trail on Strata lands above the north shore of Horne Lake, thus keeping recreational users off of Caves Road.

In its entirety, the multi-regional trail would start at the Qualicum First Nation Reserve, run up the Big Qualicum River Regional Trail, swing around the north shore of Horne Lake via Horne Lake Strata lands, drop down into Horne Lake Regional Park, head over to Port Alberni via the 1911 Road (specific location yet to be determined), hook up to the Alberni Clayoquot Regional District's (ACRD) Log Train Trail with its associated McLean Mill National Historic Site and Vancouver Island Spine Trail connection, and finish in Port Alberni at tide-water in the Alberni Valley. The sections involving the Strata lands, the Regional Park and the 1911 Road up to the RDN's boundary with the ACRD would be known collectively as the Horne Lake Regional Trail. In December 2001, the RDN Board approved a bid to the Province to see the multi-regional sea-to-sea trail designated as a BC Heritage Trail.

In early 2003, the Province directed the RDN to obtain Port Alberni First Nation support for the heritage trail concept. The lack of a clear location for the 1911 Road through private forest lands and the survey costs to resolve the matter contributed to setting the file aside over the next decade and the First Nation support for the project was not pursued any further. More recently, the Qualicum First Nation has expressed support for moving on the Sea-to-Sea heritage trail project. Long trail development, in particular that with a cultural aspect, has become a recognized engine of tourism development as recently reflected in Tourism Vancouver Islands' efforts to promote Vancouver Island trails.

The first step in achieving the heritage trail will be the planning and development of the Horne Lake Regional Trail, at least to rough but safe footpath standards. Each of the regional trail's three sections (see Map 1) offers its challenges.

- The stretch through the Strata lands (approximately 6 km) will involve some use of logging road, however at least half of the way to the west end of the lake and Regional Park will involve forging a trail below the cliffs of Mount Mark. This is a significant and extensive environmentally hazardous rock fall zone and geo-technical engineering will be required to identify and design a safe trail route, as well as to bring users down the considerable and steep slope to lake level at the Regional Park entrance. Improvements such as small bridges, switch backs, and retaining walls will be required in addition to professional services (engineering, survey, environmental).
- Within Horne Lake Regional Park (approximately 2 km), use can be made of existing footpath and road including the one bridge over the Qualicum River. This section could be considered ready to go with minor works required.
- Further to renewed discussions with Island Timberlands in October 2016, the company provided the RDN with a 2005 Posted Plan showing the location of the 1911 Road within their large BI 188 parcel. This plan information was new to the Regional land data base, which will now be updated. The next step is to ground truth the trail to see where the ROW is situated. The nature of required improvements, e.g., small bridges and switch backs for the 3 to 4 km distance from the Regional Park to the ACRD border, will depend upon route conditions found after the initial ground truthing. It is expected that some survey, geo-technical investigation and design assistance will be required in order to identify a working route sufficient for footpath development.

The first step in concluding a trail plan for the Strata lands section of the Horne Lake Regional Trail will be completion of a geo-technical feasibility and risk management study. As the landowner, the Strata would be involved in this process. Assuming the feasibility study is completed by the fall of 2017, funds for specific design and development can be identified for inclusion in the 2018 or 2019 budgets. Ground truthing and clarification of trail route along the 1911 Road should also be possible by the fall of 2017. To the extent that the 1911 Road is situated on what has already been cleared for industrial logging

traffic purposes, initial trail routing and development could be simplified. It should be possible to see the Horne Lake Regional Trail from east end of Horne Lake to the ACRD boundary in use by 2020.

The Horne Lake Regional Trail alone is a multi-faceted project involving multiple landowners, land access negotiations and the most rugged landscape ever tackled for trail development by the RDN. To achieve the estimated completion of the new trail to safe footpath standards by 2020 while completing a number of park and trail projects already in motion, some long planned as well as more recently proposed park and trail projects will likely need to be delayed.

Parks and Trails Coordinator projects that are in progress include:

- Village Way Path on Gabriola
- Coombs to Parksville Rail Trail
- The Trans Canada Trail Timberlands Rd trailhead and re-route, 25<sup>th</sup> TCT anniversary celebrations in 2017
- BC Marine Trail agreements
- More than 35 park use permits per year
- Completion of the overall RDN park and trail portfolio registry
- Completion of file storage transfer to SharePoint

Parks and Trails Coordinator projects are slated for completion that may be delayed include:

- Update of the Regional Parks and Trails Guide to include the Rail Trail
- Update of the Parks Use Regulations Bylaw 1399 to address a number of outdated provisions
- Update of Bylaw 500 as concerns off-grid campgrounds and undue limits on campsite growth at Horne Lake Regional Park
- Creation of a Park Donations policy to address years of demand for public participation in amenity funding in parks
- Park operator agreements for Lions Community Park and Errington Community Park
- Re-routing the south end of the Lighthouse Country Regional Trail to cross Black Brook
- Bicycle network plans and roadside path plans

## **ALTERNATIVES**

1. That the Regional District pursue completion of the Horne Lake Regional Trail by 2020, and over this time period, work with all related partners on achieving BC Heritage Trail status for the cross Vancouver Island route.
2. That alternative direction be provided.

## **FINANCIAL IMPLICATIONS**

\$70,000 has been included in the Regional Parks 2017 proposed budget to assist with feasibility and ground truthing work. A Rural Dividends application for \$10,000 to assist with planning costs (geo-technical, risk management services) for Strata lands route will be submitted. Until there is some advance on identifying the scope of trail development issues through the rock hazard zone below Mount Mark, and the lay of the land of the 1911 Road, the estimate overall trail development costs is challenging and will have to be defined further after the survey phase of the project. A rough estimate of costs for trail's development could range between \$750,000 and \$3,000,000 and annual operational costs to maintain the trail corridor could be in the range of \$10,000 and \$50,000.



There are however a reasonable number of infrastructure funding programs available at this time, including those provided by the Island Coastal Economic Trust for capital costs. It is noted however that grant applications constitute a project in themselves and will require resources to complete.

### STRATEGIC PLAN IMPLICATIONS

The Regional Board has identified the provision of recreational amenities for residents and the development of tourism opportunities for visitors as priorities. In addition to well meeting these goals, a completed Horne Lake Regional Trail will permit the Region to advance the Horne Lake Heritage Trail initiative and fulfill an outstanding commitment to the Qualicum First Nation. It is noted that there are only a handful of Heritage Trails around BC so the Region would score well not only on recreational tourism development but also cultural tourism development.

### SUMMARY/CONCLUSIONS

The basis for development of a Horne Lake Regional Trail was established in 2001 further to the rezoning of lands around Horne Lake. Further, the Regional Board made a bid to the Province in late 2001 to see a Horne Lake heritage trail declared to celebrate the historic cross-Island route via Horne Lake that remains meaningful for Island First Nations. A lack of clarity around the actual location of the one public road gazetted but not developed between Horne Lake Regional Park and the RDN boundary with Alberni Clayoquot Regional District, the cost of resolving the matter, and the rapid growth in regional and community parks and trails over the ensuing 15 years kept the Horne Lake Regional Trail on the back burner.

There is now renewed interest in bringing these projects forward. To move forward on them and see completion of a footpath standard Horne Lake Regional Trail by 2020, some adjustment will likely be required to overall park project planning. The cost of completing the new Regional Trail will become clearer once initial planning works (survey and engineering) are undertaken. Depending on site conditions and topography, development costs are estimated between \$750,000 and \$3,000,000. The current regional park budget includes \$70,000 to start this work, and a \$10,000 planning grant application will be submitted to the Rural Dividends program by end of October 2016.

Completion of the Horne Lake Regional Trail and, working in partnership with First Nations, the Province, private landowners and the Alberni Clayoquot Regional District, realization of BC Heritage Trail status for the trans Vancouver Island trail would represent a significant tourism development for the RDN.



---

Report Writer, Joan Michel



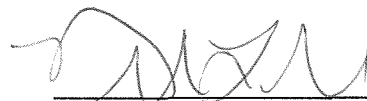
---

Manager Concurrence



---

G.M. Concurrence






---

C.A.O. Concurrence

# Proposed Horne Lake Regional Trail

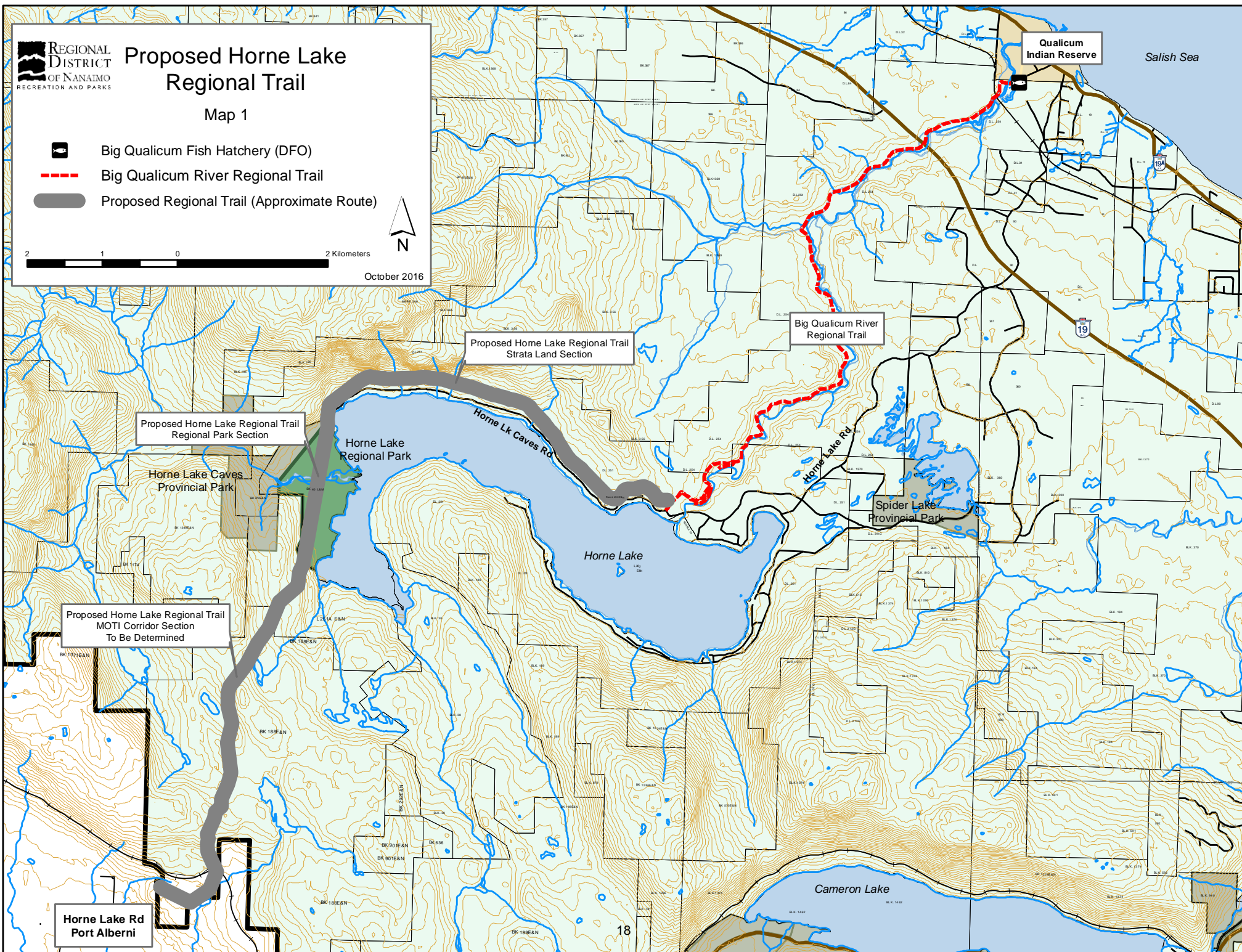
Map 1

-  Big Qualicum Fish Hatchery (DFO)
-  Big Qualicum River Regional Trail
-  Proposed Regional Trail (Approximate Route)

2 1 0 2 Kilometers



October 2016



Qualicum Indian Reserve

Salish Sea

Big Qualicum River Regional Trail

Proposed Horne Lake Regional Trail Strata Land Section

Proposed Horne Lake Regional Trail Regional Park Section

Horne Lake Caves Provincial Park

Horne Lake Regional Park

Horne Lk Caves Rd

Horne Lake Rd

Spider Lake Provincial Park




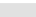
Horne Lake

Proposed Horne Lake Regional Trail MOTI Corridor Section To Be Determined

Horne Lake Rd Port Alberni

# Proposed Horne Lake Heritage Trail

Map 2

-  Big Qualicum Fish Hatchery (DFO)
-  Big Qualicum River Regional Trail
-  Proposed Horne Lake Heritage Trail
-  ACRD Section



3 1.5 0 3 Kilometers

October 2016

